

S O F T
O R I G I N A L
I N T E R I O R
F I L M

www.samsungfilm.co.kr

SOIF
G L O B A L

**Decorative
Architectural
Film**

VOL
5

(주)삼성인테리어필름

가장 완벽한 MATT FINISH

다양한 디자인 표현에 감성과 기능을 더한
더 완벽한 매트코팅
"Premium Matt"
NON-SCRATCH 기능을 추가로
내구성을 높이며 기존 인테리어필름과
차별된 또 다른 감성을 선보입니다.

Blackened Steel (Bronze)

NEW JG/JF 9001 ●●

ECO FRIENDLY SOIF 친환경 소이프

소이프 인테리어 필름은 각종 테스트를 통과한 최우수 등급의 친환경적인 표면 마감소재입니다.
자연스럽고 다양한 디자인 표현 뿐 아니라, 고객의 건강과 안전을 위해 언제나 최선을 다하고 있습니다.

Samsung Film is an eco-friendly surface finish material that has passed various tests. Its natural composition, along with our wide range of designs, makes us the leading provider in Eco Friendly, Sustainable Film.

우수한 방염성능 & 안정성 (Excellent Fire retardant performance & safety)

소방산업기술원의 엄격한 방염검사를 통과한 제품입니다. 우수한 방염성능과 안정성으로 고객의 생명과 재산을 보호합니다.

This product has passed the strict fire retardant test of the Fire Industry Institute of Technology. (Korea) Excellent fire retardant performance and stability protects you and your property.



스페인 방염 & 친환경 인증 (Fire retardant & Eco-Certified from Spain)

스페인 건축자재관련 화재 및 친환경 관련 인증입니다. 가스유해성, 포름알데히드 및 친환경 건축자재 시험을 실시하여 안전함을 검증받았습니다. (ENAC 인증번호 2019AN3043)

It is a fire and eco-friendly certification related to Spain Building Materials. Gas-free, formaldehyde and eco-friendly building materials tested and verified for safety. (ENAC Verification Number 2019AN3043)



실내건축자재 시험적합 확인제품 (INDOOR BUILDING MATERIALS TESTED)

실내용 건축자재는 적용 환경기준 적합 여부에 부합하는 제품에 부여됩니다. (포름알데히드, 톨루엔 및 휘발성 유기화합물 TVOC 등 3종의 배출량을 시험하여 적합성을 확인합니다.)

Building materials for indoor use is granted. (Formaldehyde, toluene and volatile organic compounds TVOC, etc. Test three kinds of emissions to determine their suitability.)



경기도 유망중소기업 선정 (Selected as a Promising Enterprise in South Korea)

20여년 넘게 지역사회와 사회발전을 위한 동반자로 상생도모하며 지속가능 경영 유지(삼성필름의 임직원은 지역사회 인원으로 유지 발전되고 있습니다.)

For more than 20 years, we have been a companion for community and social development. Maintaining sustainable management, we understand our most valuable assets are our people, that's why we have focused heavily on development and maintenance programs for our employees.



자체 디자인 개발 및 고유패턴의 디자인 보유 (BESPOKE LANTERN DESIGNS)

삼성필름은 자체 디자인 개발 및 고유패턴의 디자인 보유로 2020년 기술평가 우수기업으로 인증 받았습니다.

Samsung Film has developed its own design and has a unique lantern design. In 2020, we were certified as an excellent company in technology evaluation.



항균 안전 솔루션 (Anti bacterial safety solutions)

SOIF 항균 안전 솔루션 (Solution) 으로 보다 쾌적하고 안전한 공간연출 가능 (항균성능 인증 SOIF ANTI BACTERIA 로고적용 제품군을 확인하세요.)

A more comfortable and safe space with a SOIF antimicrobial safety solution can be directed (check out the Soif Anti bacteria logo family, which is certified for antimicrobial performance)



CONTENTS

SOLID

PASTEL COLORS_7p BASIC SOLID_8p TRENDY SOLID/TEXTURE_9p SOFT MATT_10p
EMBOSS PATTERN_12p PEARL WOOD_13p PAINTED WOOD_14p

PREMIUM MATT

PREMIUM WOOD_17p PREMIUM STONE_37p PREMIUM FABRIC_43p PREMIUM METAL_47p

METAL

PEARLESCENT METAL_51p HAIR LINE BRONZE METAL_53p METAL_54p

STONE & MARBLE

STONE_57p MARBLE_62p

FABRIC & LEATHER

FABRIC_65p LEATHER_67p

WOOD

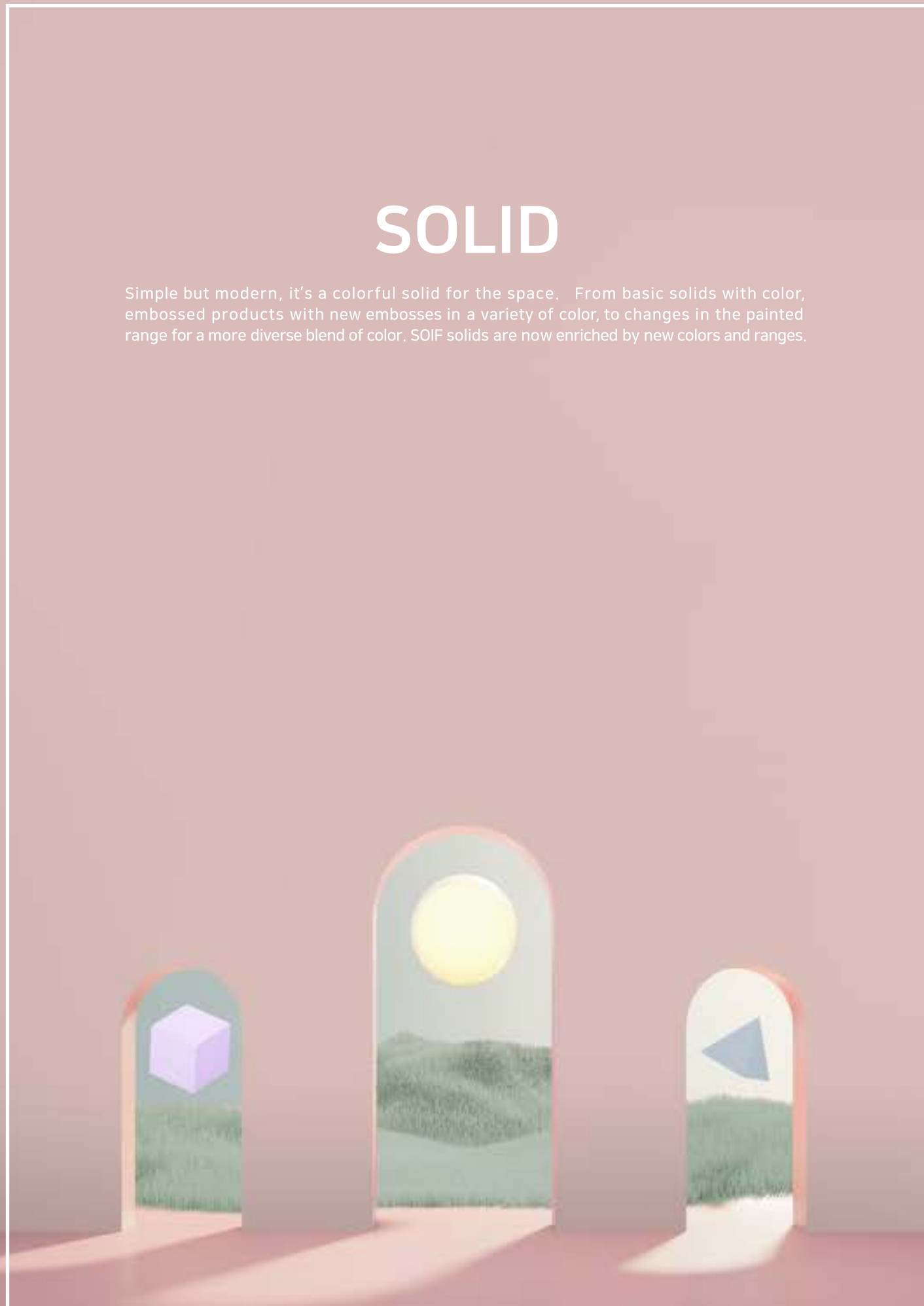
MULTI PRINTING WOOD_69p M SERIES_80p N SERIES_82p S SERIES_86p

OTHERS

VERSA-TILE_95p ANTI BACTERIA_98p

SOLID

Simple but modern, it's a colorful solid for the space. From basic solids with color, embossed products with new embosses in a variety of color, to changes in the painted range for a more diverse blend of color. SOIF solids are now enriched by new colors and ranges.



PASTEL COLORS

Fire Retardant ● | Standard Range ● | NEW NEW



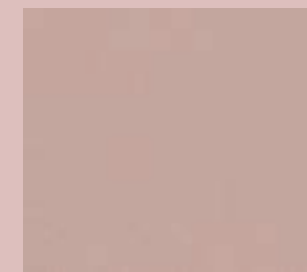
NEW NG/NF 2038 ●●
Pale yellow



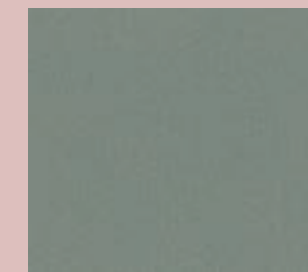
NEW NG/NF 2037 ●●
Mint green



NEW NG/NF 2039 ●●
Lilac



NEW NG/NF 2040 ●●
Baby pink



NEW NG/NF 2042 ●●
Racing green

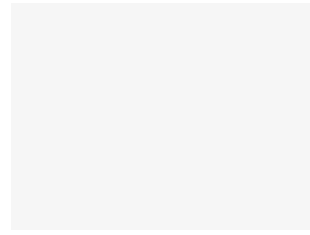


NEW NG/NF 2041 ●●
Baby blue

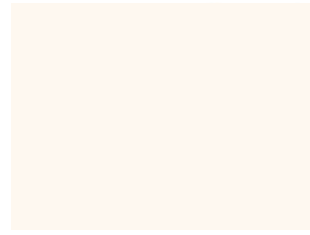
Pastels and pastel tones can be a beautiful addition to any space and are especially gorgeous when used together. Beyond the noise, get ready for a world where pastels are the most stylish palette in town.

SOLID
BASIC SOLID

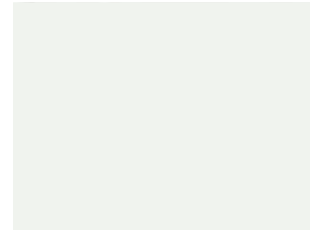
방염 ● | 비방염 ● | 신제품 **NEW**



SG/SF 122 ●●



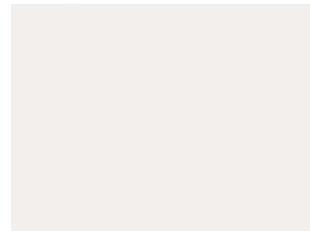
SG/SF 1196 ●●



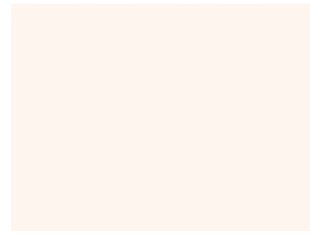
SG/SF 1197 ●●



SG/SF 91 ●●



SG/SF 113 ●●



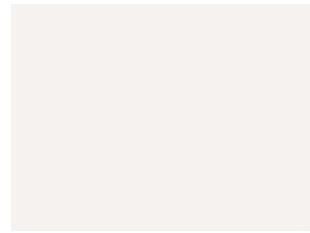
SG/SF 1201 ●●



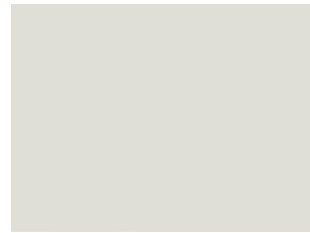
SG/SF 1198 ●●



SG/SF 1199 ●●



SG/SF 121 ●●



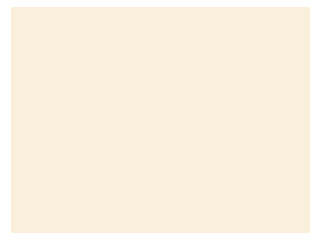
SG/SF 128 ●●



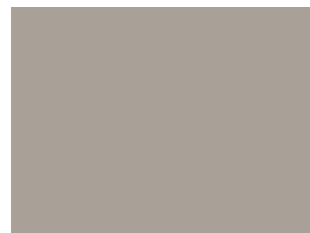
SG/SF 1135 ●●



SG/SF 134 ●●



SG/SF 120 ●●



SG/SF 97 ●●



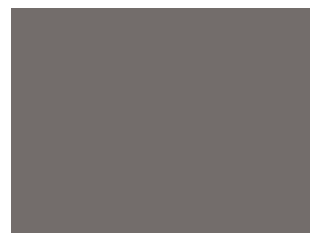
SG/SF 114 ●●



SG/SF 107 ●●



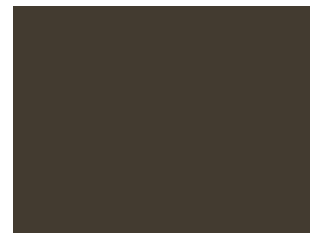
SG 111 ●



SG/SF 106 ●●



SG/SF 102 ●●



SG/SF 96 ●●



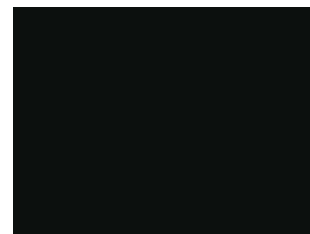
SG/SF 86 ●●



SG/SF 1128 ●●



SG/SF 119 ●●



SG/SF 87 ●●

SOLID
BASIC SOLID



SG/SF 72



SG/SF 110



SG/SF 92



SG/SF 84



SG/SF 1192



SG/SF 1138



SOLID
BASIC SOLID

방염 ● | 비방염 ● | 신제품 NEW

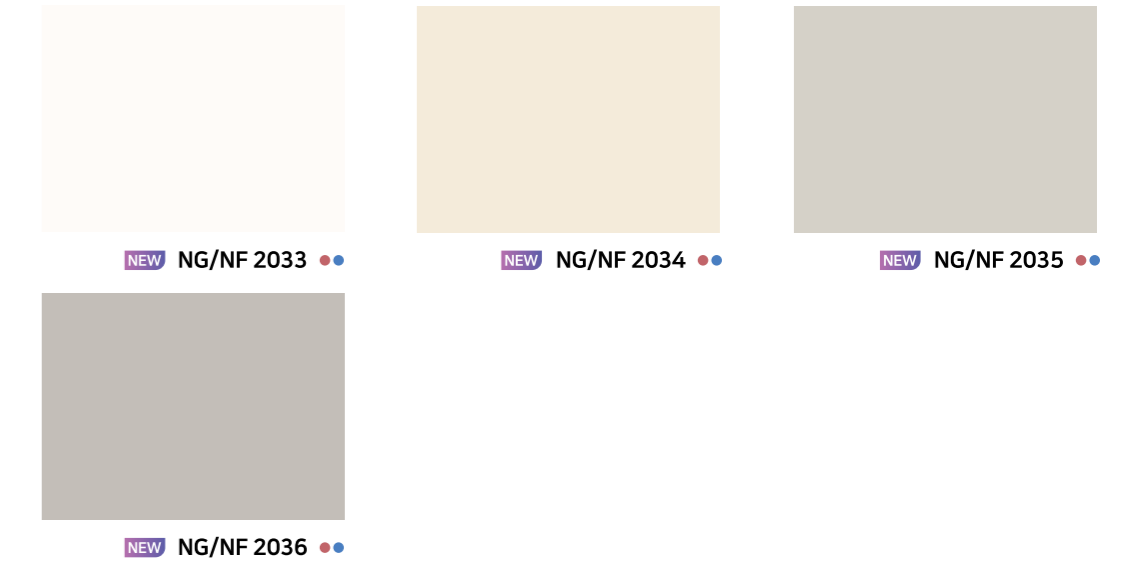


SOLID
BASIC SOLID

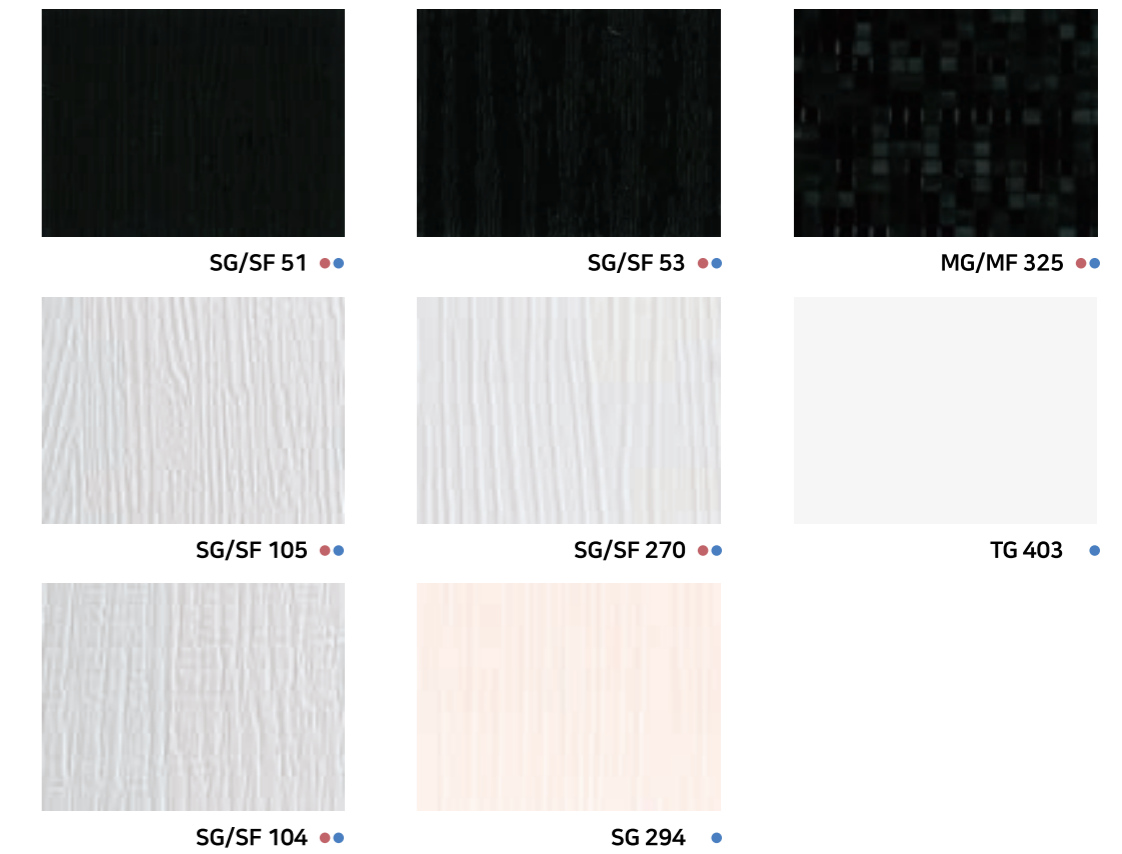
Fire Retardant ● | Standard Range ● | NEW NEW



SOLID
TRENDY SOLID



SOLID
TEXTURE



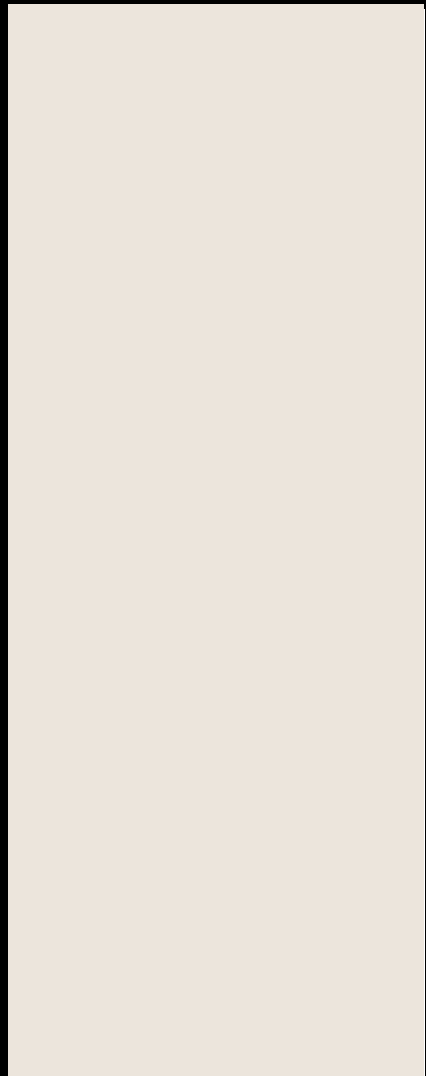
SOFT MATT

방염 ● | 비방염 ● | 신제품 **NEW**

표면 특수코팅으로 부드러운 질감과 고급스러운 무광표현이 가능하고 NON-SCRATCH기능과 페인팅 기법을 통해 단색의 편안함을 극대화한 프리미엄 제품입니다.



Soft Matt **NEW** TG/TF 4025 ●●



Soft Matt TG/TF 4018 ●●



Soft Matt **NEW** TG/TF 4026 ●●



Soft Matt **NEW** TG/TF 4028 ●●



Soft Matt **NEW** TG/TF 4029 ●●



Soft Matt **NEW** TG/TF 4027 ●●

※ 제품표면이 특수가공 처리된 제품으로 겹침 시공시 잘 붙지 않는 느낌이 있으나 충분히 눌러주어 압착되면 시간이 지날수록 접착면이 안정화됩니다.

SOFT MATT

Fire Retardant ● | Standard Range ● | NEW **NEW**

Premium product that allows of smooth texture and luxurious matt display with special coatings on the surface, and maximizes monochromatic comfort through NON-SCRATCH function and painting techniques.



Soft Matt TG 4024 ●



Soft Matt TG 4019 ●



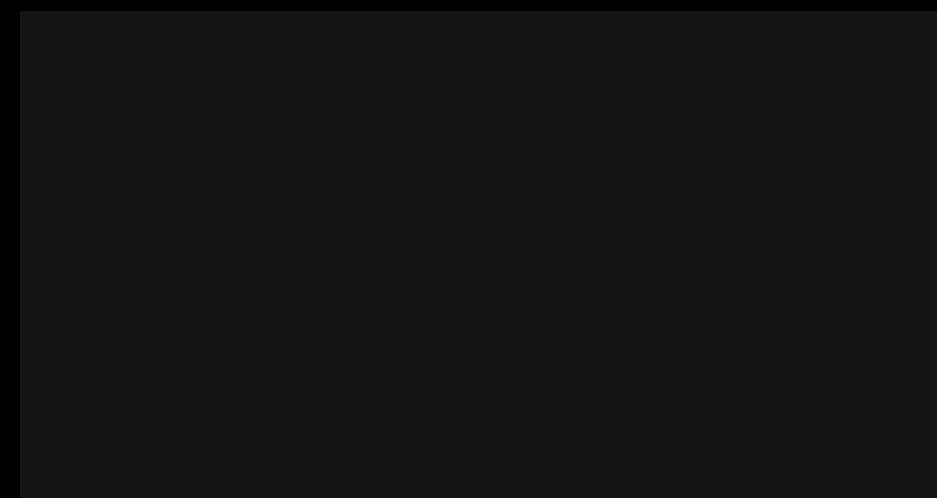
Soft Matt TG/TF 4020 ●●



Soft Matt TG/TF 4021 ●●



Soft Matt TG/TF 4022 ●●

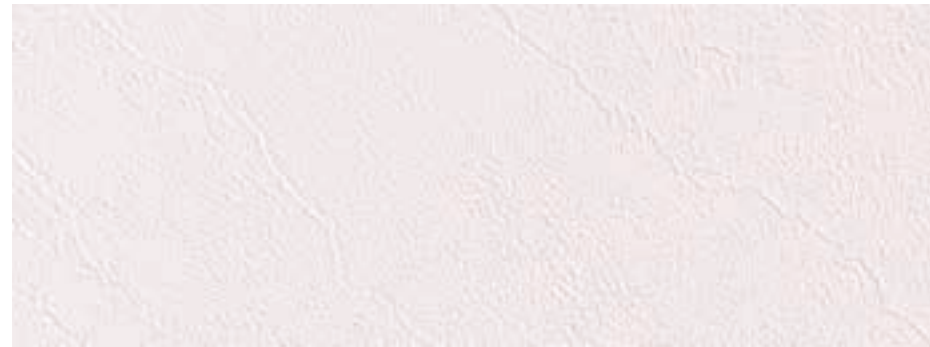


Soft Matt TG/TF 4023 ●●

※ As being treated with a special process on the surfaces, it feels initially not sticky enough in the overlapped parts, but being fully pressed adhesive parts will be stabilized stronger over time.

SOLID
EMBOSS PATTERN

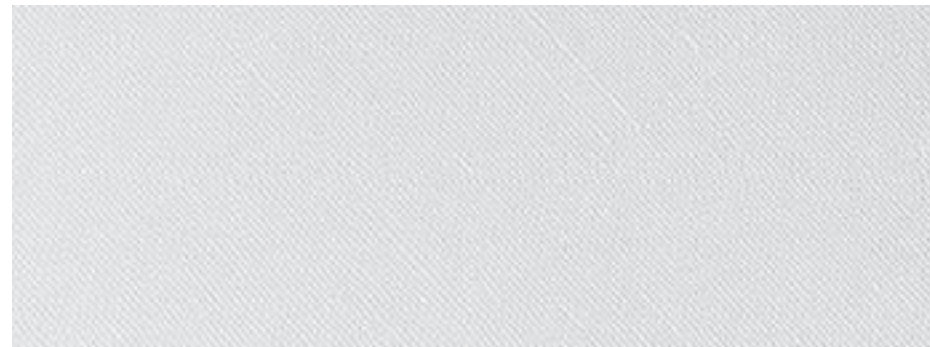
방염 ● | 비방염 ● | 신제품 **NEW**



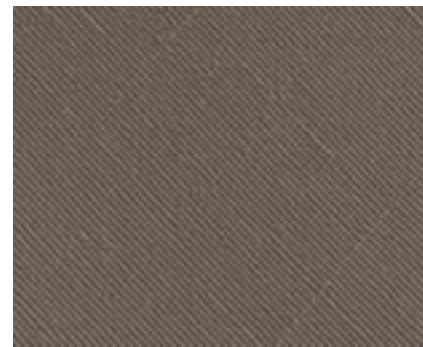
Emboss Pattern **MG/MF 3071** ●●



Emboss Pattern **MG/MF 3073** ●●



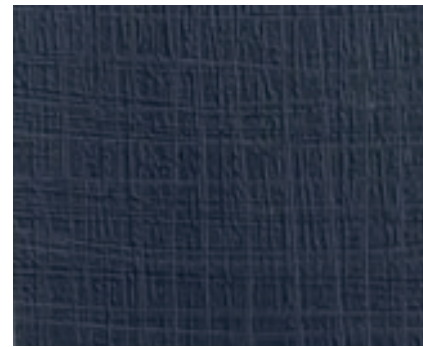
Emboss Pattern **DG/DF 3508** ●●



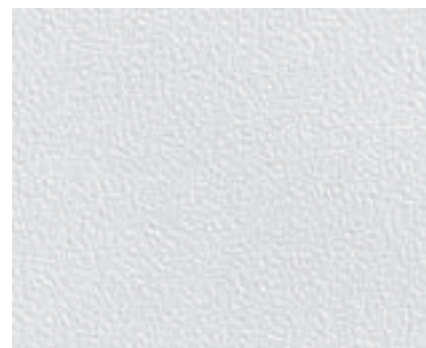
Emboss Pattern **DG/DF 3509** ●●



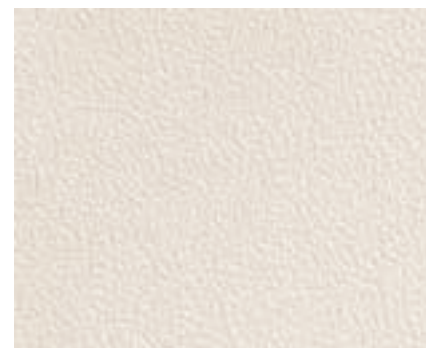
Painted Wood **NG/NF 2026** ●●



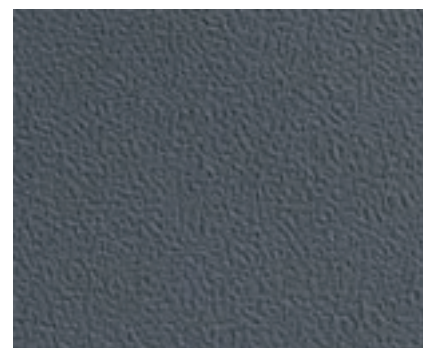
Painted Wood **NG 2028** ●



Emboss Pattern **NG/NF 2029** ●●



Emboss Pattern **NG/NF 2030** ●●



Emboss Pattern **NG/NF 2031** ●●

SOLID
PEARL WOOD

Fire Retardant ● | Standard Range ● | NEW **NEW**



Pearl Wood **MG/MF 3050** ●●



Pearl Wood **MG 50** ●



Pearl Wood **TG 433** ●



Pearl Wood **MG 3051** ●



Pearl Wood **MG 466** ●



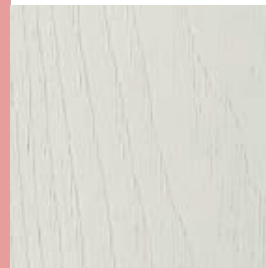
Pearl Wood **MG 496** ●

PAINTED WOOD

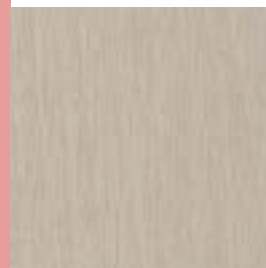
| 비방염 ● | 신제품 **NEW**



MG/MF 3074 ●●



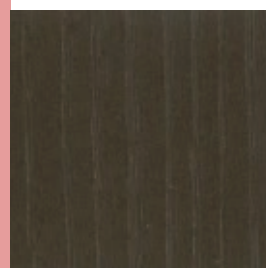
MG/MF 3027 ●●



MG 3032 ●



MG/MF 3075 ●●



MG/MF 3076 ●●

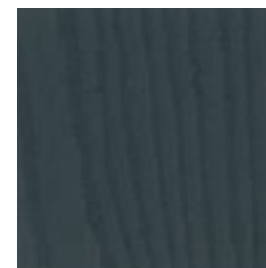
SOLID PAINTED WOOD



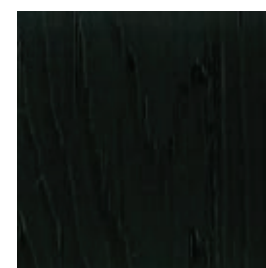
MG



MG



S



N



SG/SF 1150

SOLID
PAINTED WOOD



SOLID
PAINTED WOOD



방염 ● | 비방염 ● | 신제품 NEW

SOLID
PAINTED WOOD



Fire Retardant ● | Standard Range ● | NEW NEW

SOLID
PAINTED WOOD



PREMIUM WOOD

Premium matt are specially designed for surfaces. Soft texture and luxurious matt display. Through NON-SCRATCH functions and painting techniques, Premium products maximize luxury.

HG/HF 5113

The images are for illustrative purposes and may differ from actual product.

PREMIUM MATT WOOD

방염 ● | 비방염 ● | 신제품 **NEW**

손끝으로
만져보세요!



Primary Oak

NEW HG/HF 5113 ●●

※ 제품표면이 특수가공 처리된 제품으로 겹침 시공시 잘 붙지 않는 느낌이 있으나 충분히 눌러주어 압착되면 시간이 지날수록 점착면이 안정화됩니다.

PREMIUM MATT
WOOD

방염 ● | 비방염 ● | 신제품 **NEW**



HG/HF 5112



Primary Oak

NEW HG/HF 5112 ●●



Primary Oak

NEW HG/HF 5114 ●●

상기 이미지는 이해를 돕기 위한 연출 이미지로 실제 제품과 다를 수 있습니다.

※ 제품표면이 특수가공 처리된 제품으로 겹침 시공시 잘 붙지 않는 느낌이 있으나 충분히 눌러주어 압착되면 시간이 지날수록 접착면이 안정화됩니다.

PREMIUM MATT
WOOD

Fire Retardant ● | Standard Range ● | **NEW** **NEW**



Oak

NEW HG/HF 5106 ●●



Oak

NEW HG/HF 5107 ●●

※ As being treated with a special process on the surfaces, it feels initially not sticky enough in the overlapped parts, but being fully pressed adhesive parts will be stabilized stronger over time.

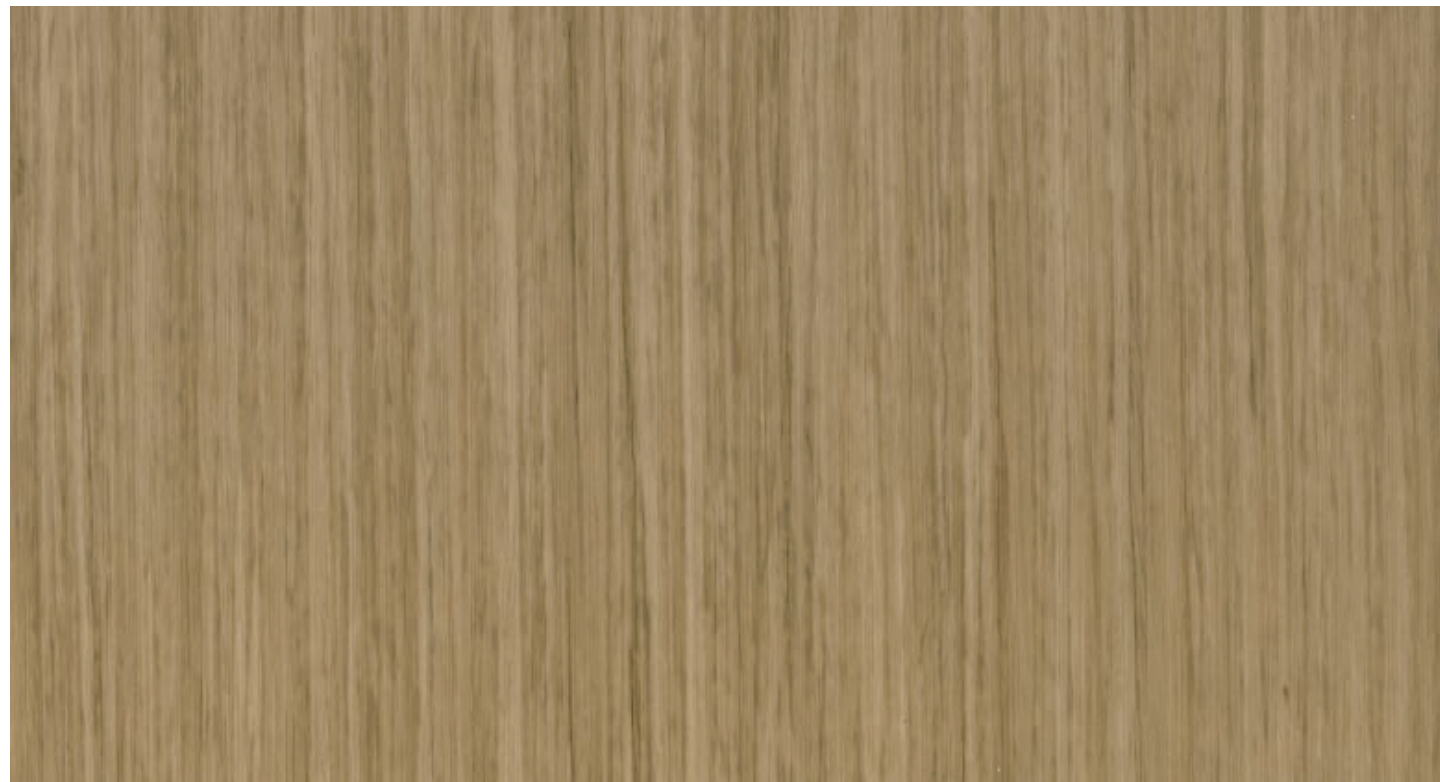
PREMIUM MATT
WOOD

방염 ● | 비방염 ● | 신제품 **NEW**



Rainy Teak

NEW HG/HF 5108



Rainy Teak

NEW HG/HF 5109

※ 제품표면이 특수가공 처리된 제품으로 겹침 시공시 잘 붙지 않는 느낌이 있으나 충분히 눌러주어 압착되면 시간이 지날수록 접착면이 안정화됩니다.



HG/HF 5108

상기 이미지는 이해를 돕기 위한 연출 이미지로 실제 제품과 다를 수 있습니다.

PREMIUM MATT
WOOD

방염 ● | 비방염 ● | 신제품 **NEW**



Oak

NEW HG/HF 5110 ●●



Oak

NEW HG/HF 5111 ●●

※ 제품표면이 특수가공 처리된 제품으로 겹침 시공시 잘 붙지 않는 느낌이 있으나 충분히 눌러주어 압착되면 시간이 지날수록 접착면이 안정화됩니다.



HG/HF 5110

상기 이미지는 이해를 돕기 위한 연출 이미지로 실제 제품과 다를 수 있습니다.

PREMIUM MATT

WOOD

방염 ● | 비방염 ● | 신제품 NEW



Ash

CG/CF 5503 ●●



Ash

CG/CF 5504 ●●



Ash

CG/CF 5505 ●●

※ 제품표면이 특수가공 처리된 제품으로 겹침 시공시 잘 붙지 않는 느낌이 있으나 충분히 눌러주어 압착되면 시간이 지날수록 접착면이 안정화됩니다.



CG/CF 5505

상기 이미지는 이해를 돕기 위한 연출 이미지로 실제 제품과 다를 수 있습니다.

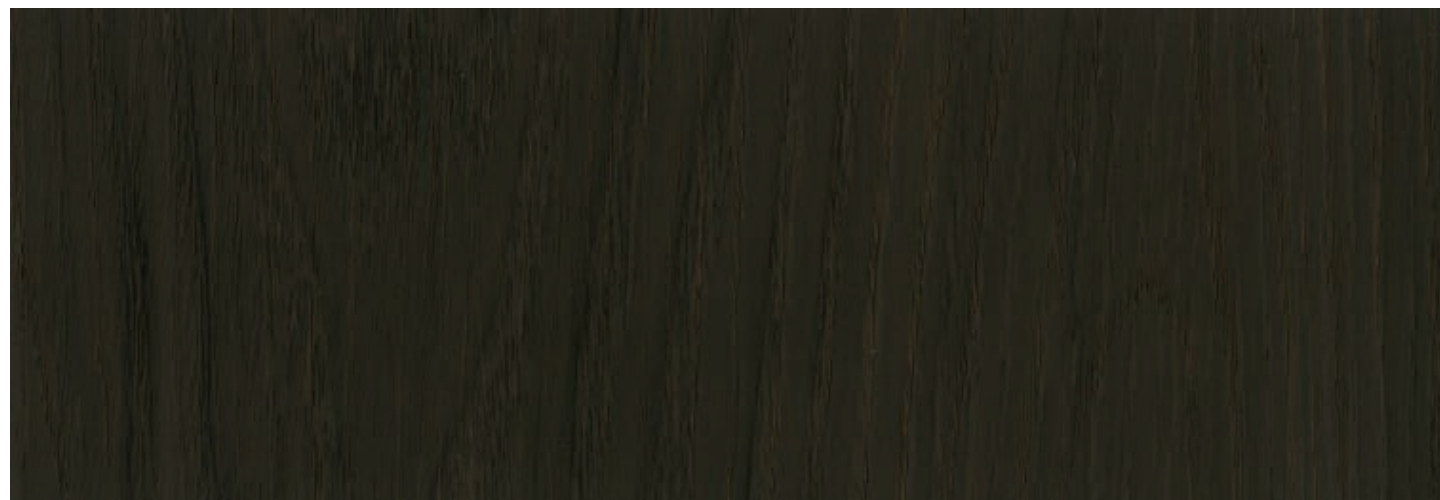
PREMIUM MATT
WOOD

방염 ● | 비방염 ● | 신제품 NEW



Ash

CG/CF 5506 ●●



Ash

CG/CF 5507 ●●



CG/CF 5507

상기 이미지는 이해를 돕기 위한 연출 이미지로 실제 제품과 다를 수 있습니다.

※ 제품표면이 특수가공 처리된 제품으로 겹침 시공시 잘 붙지 않는 느낌이 있으나 충분히 눌러주어 압착되면 시간이 지날수록 접착면이 안정화됩니다.

PREMIUM MATT
WOOD

Fire Retardant ● | Standard Range ● | NEW NEW



CG/CF 5532

The images are for illustrative purposes and may differ from actual product.



Classic Oak

CG/CF 5532 ●●



Classic Oak

CG/CF 5533 ●●

※ As being treated with a special process on the surfaces, it feels initially not sticky enough in the overlapped parts, but being fully pressed adhesive parts will be stabilized stronger over time.

PREMIUM MATT
WOOD

방염 ● | 비방염 ● | 신제품 **NEW**



Oak

CG/CF 5516 ●●



Oak

CG/CF 5517 ●●



Oak

CG/CF 5518 ●●

상기 이미지는 이해를 돕기 위한 연출 이미지로 실제 제품과 다를 수 있습니다.

※ 제품표면이 특수가공 처리된 제품으로 겹침 시공시 잘 붙지 않는 느낌이 있으나 충분히 눌러주어 압착되면 시간이 지날수록 접착면이 안정화됩니다.

PREMIUM MATT
WOOD

Fire Retardant ● | Standard Range ● | **NEW** **NEW**



The images are for illustrative purposes and may differ from actual product.



Oak

CG/CF 5500 ●●



Oak

CG/CF 5501 ●●



Oak

CG/CF 5502 ●●

※ As being treated with a special process on the surfaces, it feels initially not sticky enough in the overlapped parts, but being fully pressed adhesive parts will be stabilized stronger over time.

PREMIUM MATT
WOOD

방염 ● | 비방염 ● | 신제품 NEW



Teak CG/CF 5512 ●●



Teak CG/CF 5510 ●●



Teak CG/CF 5511 ●●

상기 이미지는 이해를 돕기 위한 연출 이미지로 실제 제품과 다를 수 있습니다.

※ 제품표면이 특수가공 처리된 제품으로 겹침 시공시 잘 붙지 않는 느낌이 있으나 충분히 눌러주어 압착되면 시간이 지날수록 접착면이 안정화됩니다.

PREMIUM MATT
WOOD

Fire Retardant ● | Standard Range ● | NEW NEW



Ash CG/CF 5513 ●●



Ash CG/CF 5514 ●●



Ash CG/CF 5515 ●●



The images are for illustrative purposes and may differ from actual product.

※ As being treated with a special process on the surfaces, it feels initially not sticky enough in the overlapped parts, but being fully pressed adhesive parts will be stabilized stronger over time.

PREMIUM MATT
WOOD

방염 ● | 비방염 ● | 신제품 **NEW**



Pine

CG/CF 5508 ●●



Pine

CG/CF 5509 ●●

※ 제품표면이 특수가공 처리된 제품으로 겹침 시공시 잘 붙지 않는 느낌이 있으나 충분히 눌러주어 압착되면 시간이 지날수록 점착면이 안정화됩니다.



CG/CF 5508

상기 이미지는 이해를 돕기 위한 연출 이미지로 실제 제품과 다를 수 있습니다.

PREMIUM MATT

WOOD

방염 ● | 비방염 ● | 신제품 NEW



Standard Oak

CG/CF 5520 ●●

PREMIUM MATT

WOOD

Fire Retardant ● | Standard Range ● | NEW NEW



Standard Oak

CG/CF 5519 ●●



Standard Oak

CG/CF 5521 ●●



Standard Oak

CG/CF 5522 ●●

※ 제품표면이 특수가공 처리된 제품으로 겹침 시공시 잘 붙지 않는 느낌이 있으나 충분히 눌러주어 압착되면 시간이 지날수록 점착면이 안정화됩니다.

※ As being treated with a special process on the surfaces, it feels initially not sticky enough in the overlapped parts, but being fully pressed adhesive parts will be stabilized stronger over time.

PREMIUM STONE

MATT STONE has increased surface quality with matt and special coatings felt in real stone. Enhance the dignity of your space with new sensuous products.

HG/HF 5119

The images are for illustrative purposes and may differ from actual product.

PREMIUM MATT STONE

방염 ● | 비방염 ● | 신제품 NEW

손끝으로
만져보세요!



Brush Cement

NEW HG/HF 5117 ●●



Brush Cement

NEW HG/HF 5118 ●●



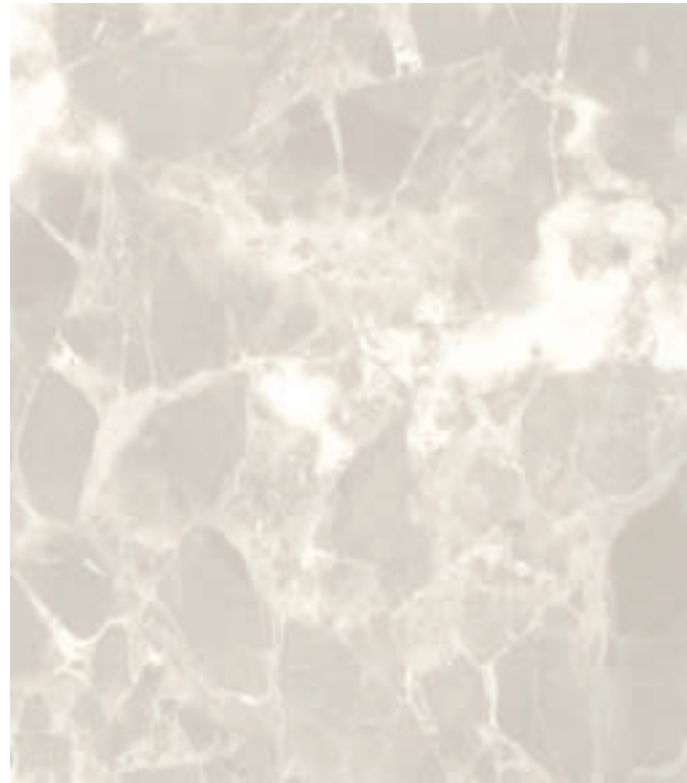
Brush Cement

NEW HG/HF 5119 ●●

※ 제품표면이 특수가공 처리된 제품으로 겹침 시공시 잘 붙지 않는 느낌이 있으나 충분히 눌러주어 압착되면 시간이 지날수록 점착면이 안정화됩니다.

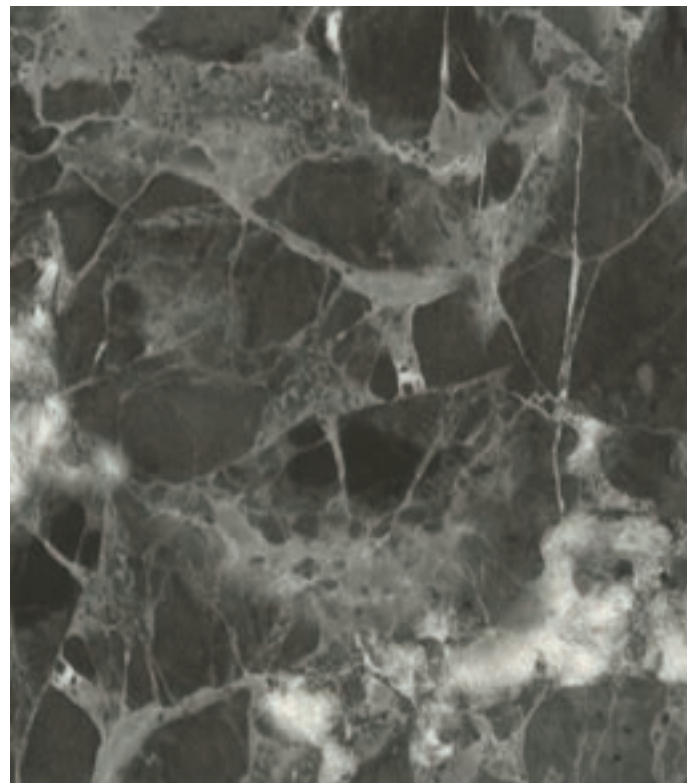
PREMIUM MATT
STONE

방염 ● | 비방염 ● | 신제품 **NEW**



Matt Marble

NEW HG/HF 5120 ●●



Matt Marble

NEW HG/HF 5121 ●●

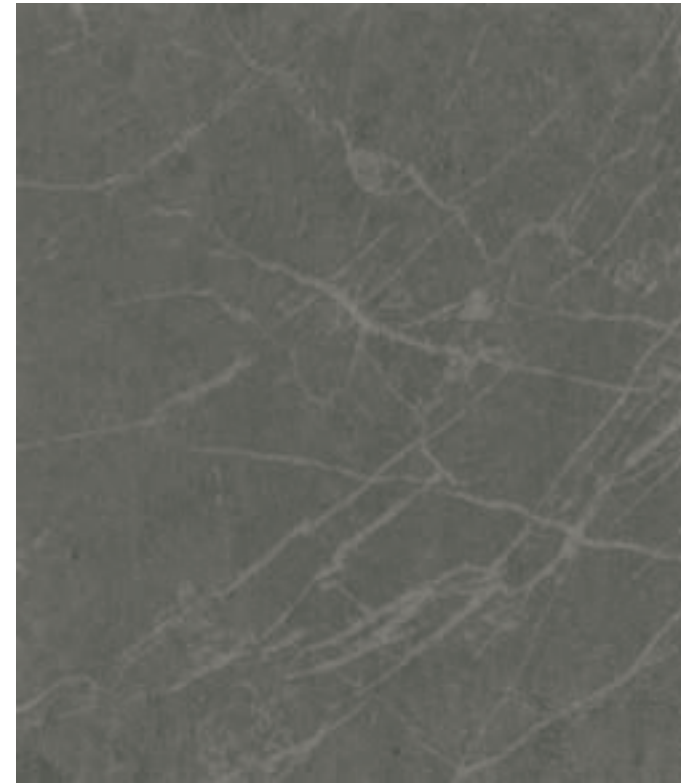
HG/HF 5120

상기 이미지는 이해를 돕기 위한 연출 이미지로 실제 제품과 다를 수 있습니다.

※ 제품표면이 특수가공 처리된 제품으로 겹침 시공시 잘 붙지 않는 느낌이 있으나 충분히 눌러주어 압착되면 시간이 지날수록 접착면이 안정화됩니다.

PREMIUM MATT
STONE

Fire Retardant ● | Standard Range ● | **NEW** **NEW**



Matt Marquina

NEW HG/HF 5122 ●●



Matt Marquina

NEW HG/HF 5123 ●●



HG/HF 5122

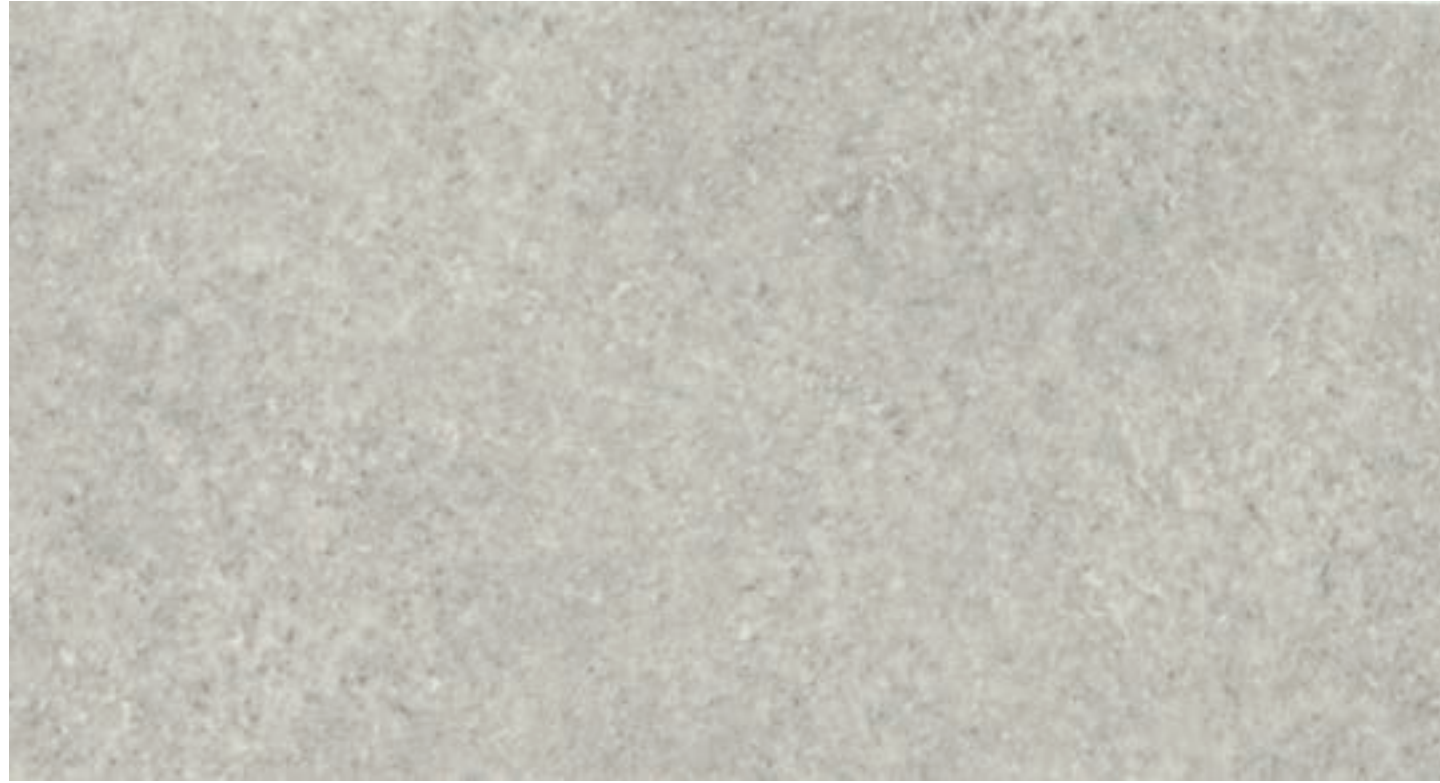
The images are for illustrative purposes and may differ from actual product.

※ As being treated with a special process on the surfaces, it feels initially not sticky enough in the overlapped parts, but being fully pressed adhesive parts will be stabilized stronger over time.

PREMIUM MATT

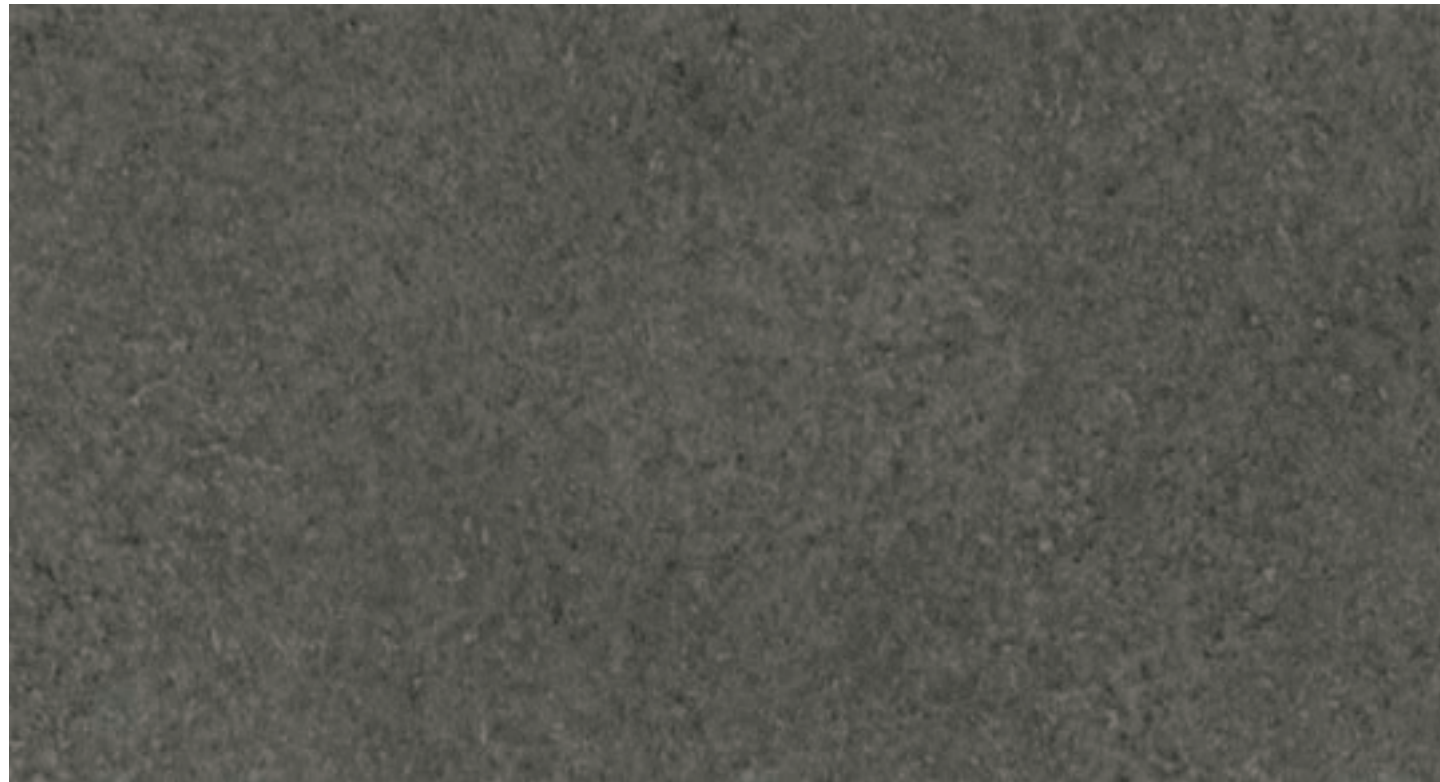
STONE

방염 ● | 비방염 ● | 신제품 NEW



Urban Stone

NEW HG/HF 5115 ●●



Urban Stone

NEW HG/HF 5116 ●●

※ 제품표면이 특수가공 처리된 제품으로 겹침 시공시 잘 붙지 않는 느낌이 있으나 충분히 눌러주어 압착되면 시간이 지날수록 접착면이 안정화됩니다.

PREMIUM MATT

STONE

Fire Retardant ● | Standard Range ● | NEW NEW



Travertine

CG/CF 5529 ●●



Travertine

CG/CF 5530 ●●



Travertine

CG/CF 5531 ●●

※ As being treated with a special process on the surfaces, it feels initially not sticky enough in the overlapped parts, but being fully pressed adhesive parts will be stabilized stronger over time.

PREMIUM FABRIC

MATT FABRIC is a premium product that provides warmth, softness of a fabric which is on a different level from existing fabrics and a soft texture when touched.



CG/CF 5528

The images are for illustrative purposes and may differ from actual product.

PREMIUM MATT FABRIC

방염 ● | 비방염 ● | 신제품 NEW

손끝으로
만져보세요!



Real Fabric

CG/CF 5528 ●●



Real Fabric

CG/CF 5526 ●●



Real Fabric

CG/CF 5527 ●●

※ 제품표면이 특수가공 처리된 제품으로 겹침 시공시 잘 붙지 않는 느낌이 있으나 충분히 눌러주어 압착되면 시간이 지날수록 점착면이 안정화됩니다.

PREMIUM MATT
FABRIC

방염 ● | 비방염 ● | 신제품 **NEW**



Warm Linen

CG/CF 5523 ●●



Warm Linen

CG/CF 5524 ●●



Warm Linen

CG/CF 5525 ●●

※ 제품표면이 특수가공 처리된 제품으로 겹침 시공시 잘 붙지 않는 느낌이 있으나 충분히 눌러주어 압착되면 시간이 지날수록 점착면이 안정화됩니다.



CG/CF 5525

상기 이미지는 이해를 돕기 위한 연출 이미지로 실제 제품과 다를 수 있습니다.

PREMIUM METAL

MATT METAL is a range of products that express the feel of a simple, luxurious metal. Decorate your space with confidence with MATT METAL, which matches your metallic modern lifestyle.

JG/JF 9000

The images are for illustrative purposes and may differ from actual product.

PREMIUM MATT METAL

방염 ● | 비방염 ● | 신제품 NEW



Blackened Steel (Blue) 

NEW JG/JF 9000 ●●



Blackened Steel (Bronze) 

NEW JG/JF 9001 ●●

※ 제품표면이 특수가공 처리된 제품으로 겹침 시공시 잘 붙지 않는 느낌이 있으나 충분히 눌러주어 압착되면 시간이 지날수록 점착면이 안정화됩니다.

PREMIUM MATT

METAL

방염 ● | 비방염 ● | 신제품 NEW



XG/XF 7014

상기 이미지는 이해를 돕기 위한 연출 이미지로 실제 제품과 다를 수 있습니다.



Cloud Metal

XG/XF 7015 ●●



Metal Slate

XG/XF 7014 ●●

※ 제품표면이 특수가공 처리된 제품으로 겹침 시공시 잘 붙지 않는 느낌이 있으나 충분히 눌러주어 압착되면 시간이 지날수록 점착면이 안정화됩니다.

PREMIUM MATT

METAL

Fire Retardant ● | Standard Range ● | NEW NEW



Minimal Cloud

XG/XF 7012 ●●



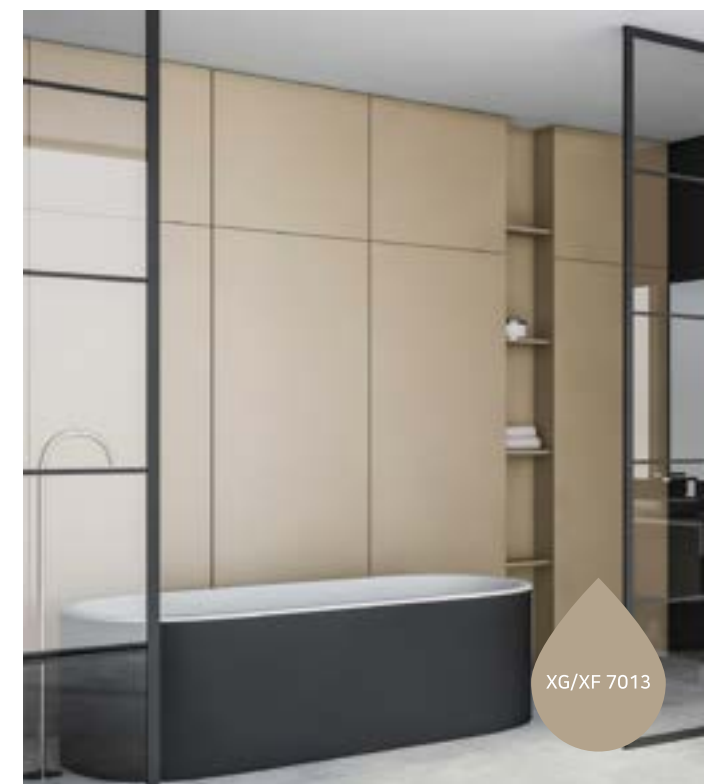
Matt Solid

XG/XF 7013 ●●



Minimal Cloud

XG/XF 7011 ●●



XG/XF 7013

The images are for illustrative purposes and may differ from actual product.

※ As being treated with a special process on the surfaces, it feels initially not sticky enough in the overlapped parts, but being fully pressed adhesive parts will be stabilized stronger over time.

METAL

Monochromatic and metallic, these two materials have recently become the most used materials in various spaces, from furniture to art walls and home appliances. Enjoy modern changes that suit your style in a variety of spaces.

HG/HF 5104

XG/XF 7019

The images are for illustrative purposes and may differ from actual product.

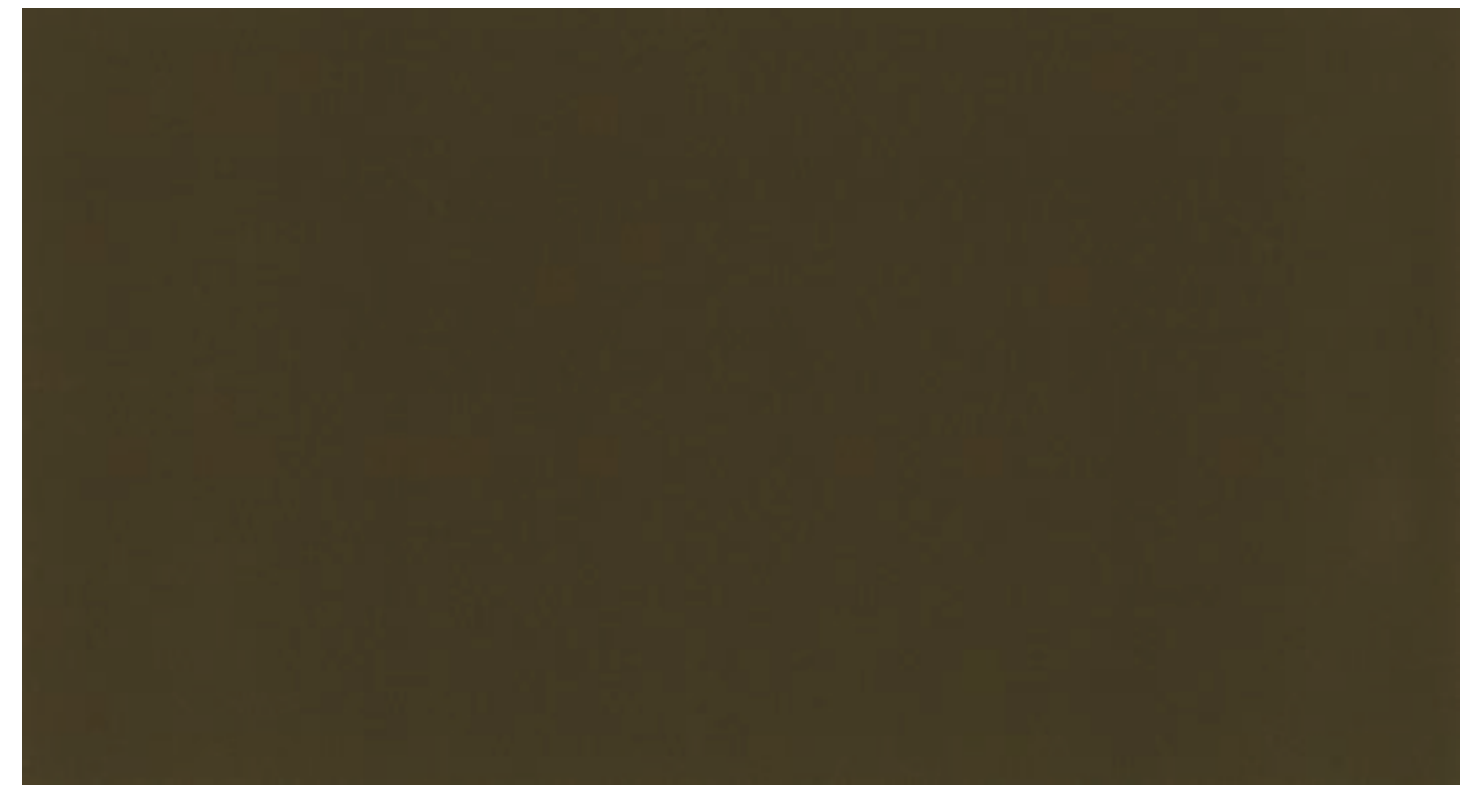
METAL PEARLESCENT METAL

방영 ● | 비방영 ● | 신제품 **NEW**



Rose Gold

NEW HG/HF 5104 ●●



Bronze Metal

NEW XG/XF 7019 ●●

METAL

PEARLESCENT METAL

방염 ● | 비방염 ● | 신제품 NEW



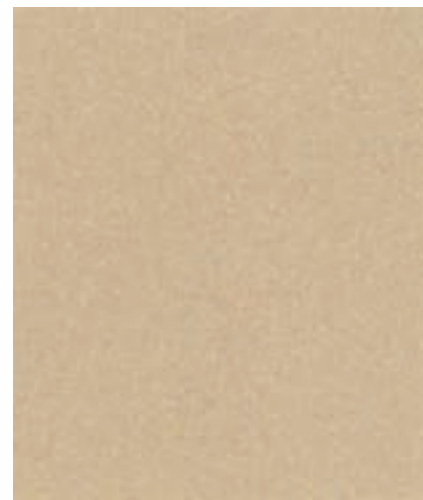
White Gold NEW HG/HF 5100 ●●



Peach Gold NEW HG/HF 5101 ●●



Metal Gold NEW HG/HF 5102 ●●



Champagne Gold NEW HG/HF 5103 ●●



Bronze Gold NEW HG/HF 5105 ●●

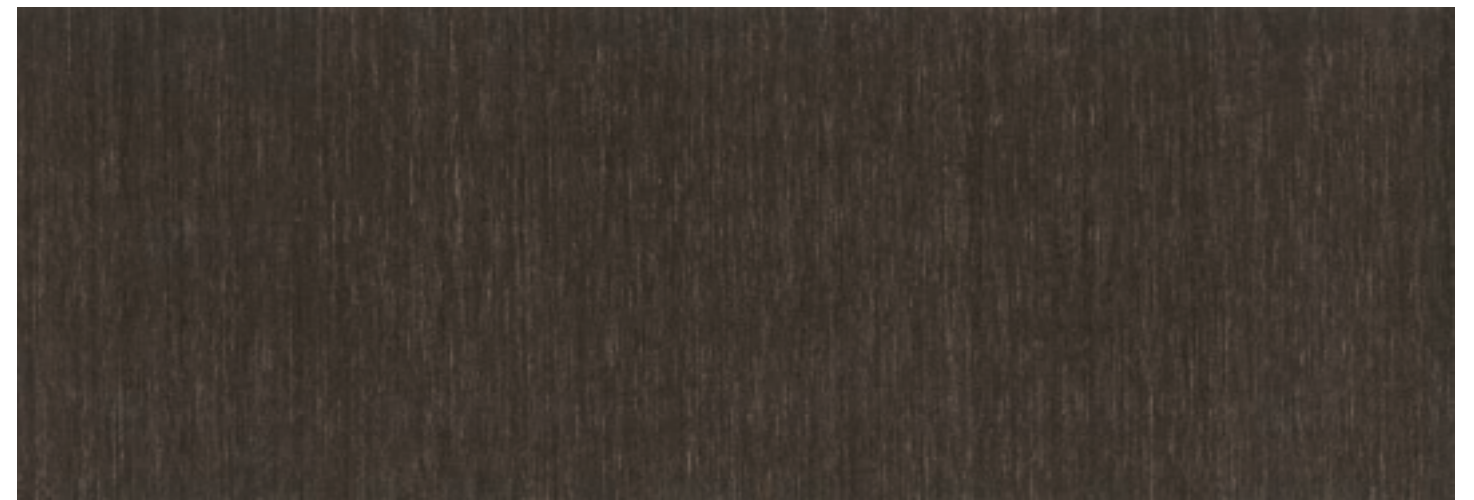
METAL

HAIRLINE BRONZE METAL

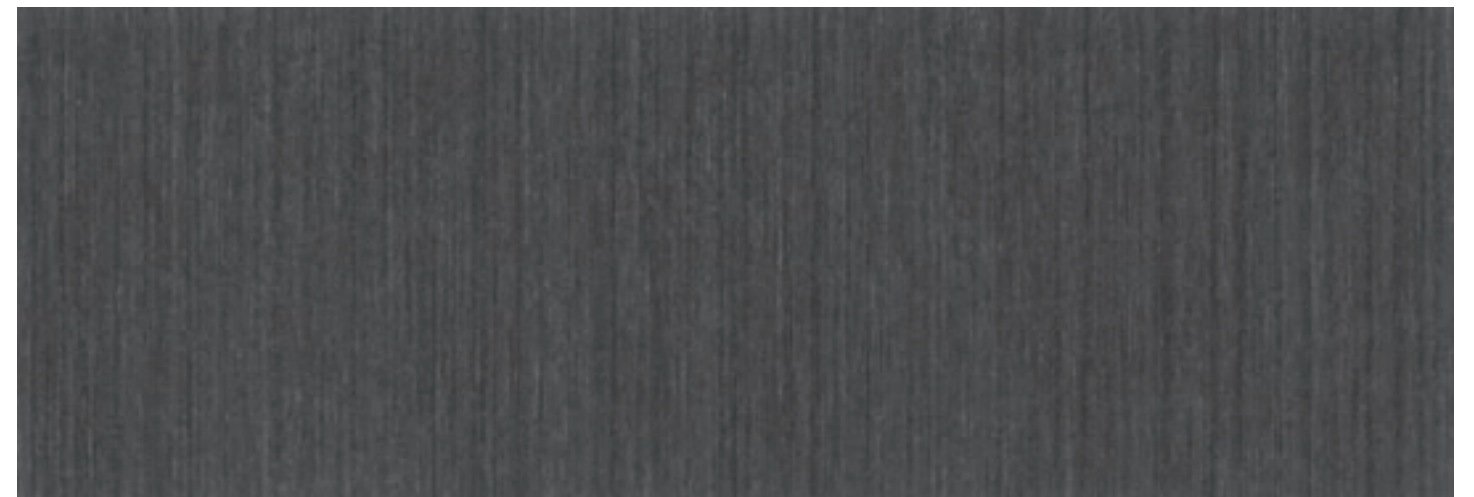
Fire Retardant ● | Standard Range ● | NEW NEW



Yellow Bronze NEW XG/XF 7016 ●●



Red Bronze NEW XG/XF 7017 ●●



Dark Bronze NEW XG/XF 7018 ●●

METAL

방염 ● | 비방염 ● | 신제품 NEW



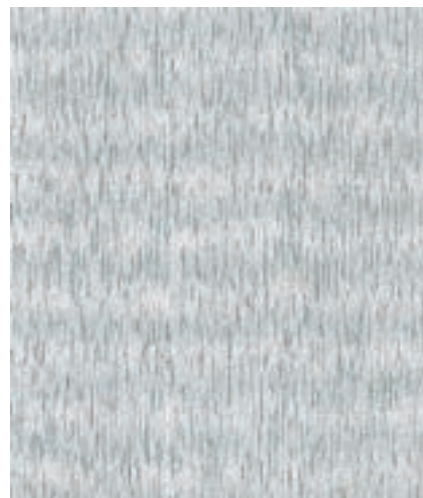
Metal **MG 124** ●



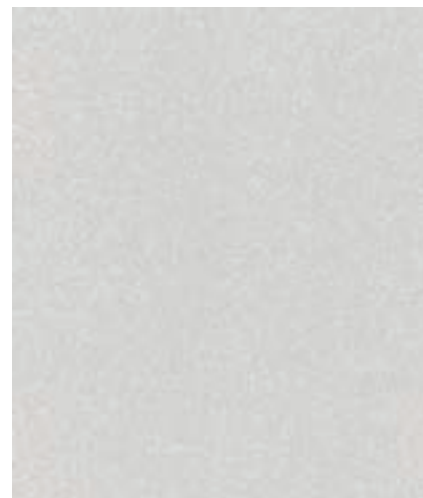
Metal **MG 499** ●



Metal **MG/MF 125** ●●



Metal **MG/MF 123** ●●



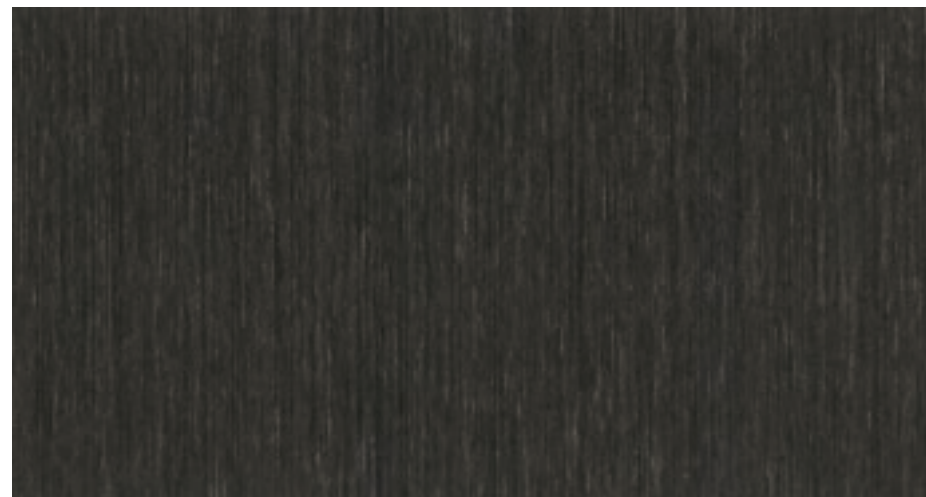
Metal **MG 498** ●



Metal **MG 3021** ●



Metal **MG 3022** ●



Metal **MG/MF 448** ●●

METAL

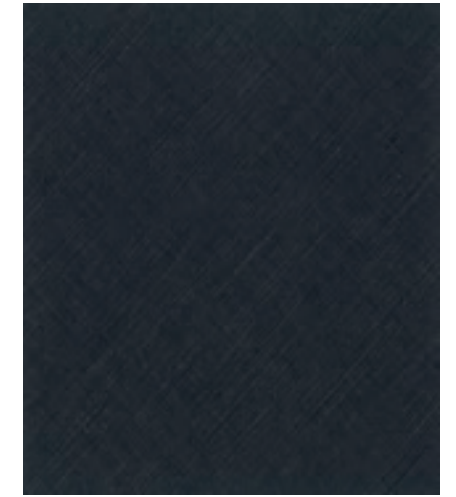
Fire Retardant ● | Standard Range ● | NEW NEW



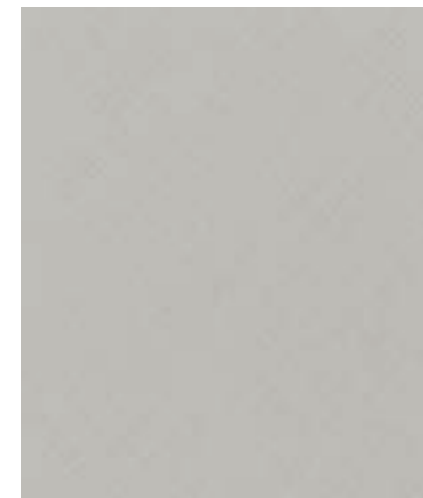
Saffiano **DG 3500** ●



Saffiano **DG 3501** ●



Saffiano **DG 3504** ●



Saffiano **DG 3502** ●



Saffiano **DG 3503** ●



Cement Metal **TG 4006** ●



Luxury Metal **JG 698** ●



Luxury Metal **TG/TF 465** ●●



Metal Leaf **TG 4004** ●

STONE & MARBLE

Apply a natural (floating) sensibility and original design to your space with colours such as concrete, stone and marble, and three-dimensional embossing. With its unchanging beauty, the stone material blends harmoniously with a variety of textured materials, including metal, matt and light, to add value to the space. Create a more luxurious atmosphere.

YG/YF 4503

MG/MF 984

The images are for illustrative purposes and may differ from actual product.

STONE & MARBLE

방염 ● | 비방염 ● | 신제품 NEW



Aspetto

YG/YF 4503 ●●

STONE & MARBLE

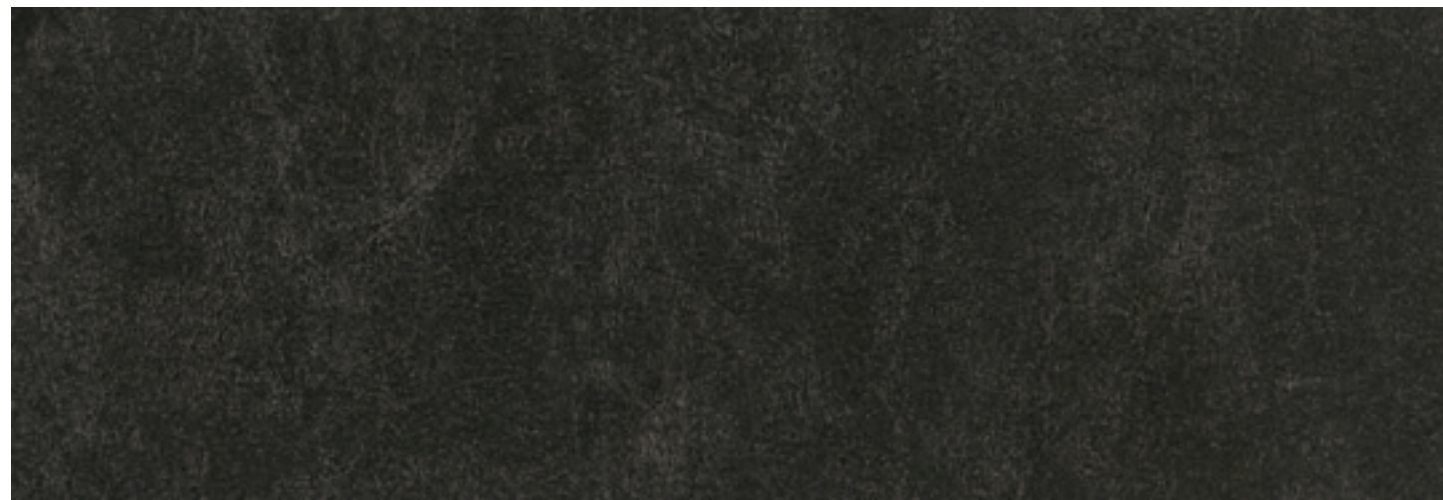
STONE

방염 ● | 비방염 ● | 신제품 NEW



Aspetto

YG/YF 4501 ●●



Aspetto

YG/YF 4502 ●●



Aspetto

YG 4500 ●

STONE & MARBLE

STONE

Fire Retardant ● | Standard Range ● | NEW NEW



Modern Stone

MG/MF 3080 ●●



Modern Stone

MG/MF 3081 ●●



Modern Stone

MG/MF 3082 ●●



Modern Stone

MG 3083 ●



Modern Concrete

MG/MF 3085 ●●



Concrete

TG 4010 ●

STONE & MARBLE

STONE

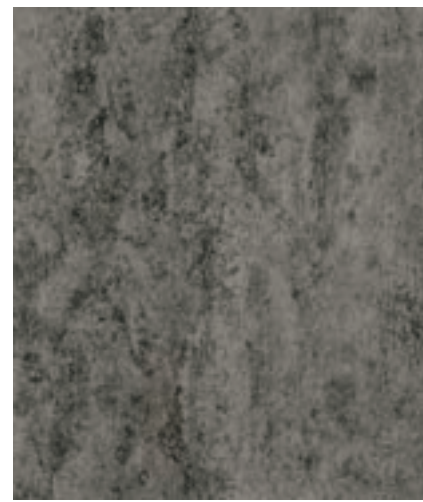
방염 ● | 비방염 ● | 신제품 NEW



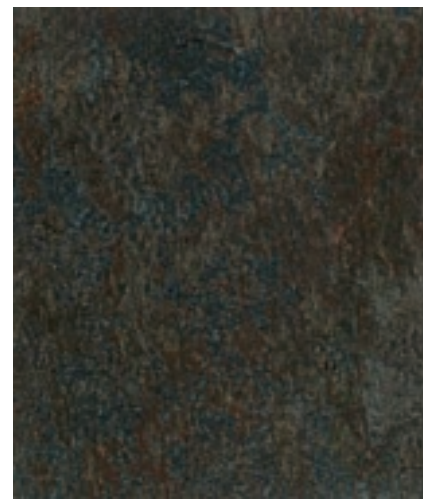
상기 이미지는 이해를 돕기 위한 연출 이미지로 실제 제품과 다를 수 있습니다.



Concrete MG 451 ●



Rustic Stone MG 462 ●



Peacock Natural MG 3003 ●

STONE & MARBLE

STONE

Fire Retardant ● | Standard Range ● | NEW NEW



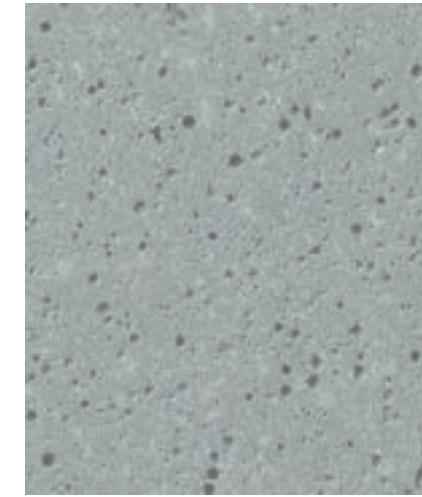
Concrete MG/MF 984 ●●



Concrete MG 985 ●



Concrete MG/MF 986 ●●



Natural Stone PG 6010 ●



Urban Stone MG/MF 485 ●●



Real Stone TG 4014 ●



Sugar Stone SG 855 ●



Bricks NG 968 ●



Matt Marble MG 3058 ●



Peacock Natural MG/MF 3001 ●●

STONE & MARBLE

MARBLE

방염 ● | 비방염 ● | 신제품 NEW



MG/MF 3054



Carrara

MG/MF 3054 ●●



Marble

TG 425 ●

상기 이미지는 이해를 돕기 위한 연출 이미지로 실제 제품과 다를 수 있습니다.

STONE & MARBLE

MARBLE

Fire Retardant ● | Standard Range ● | NEW NEW



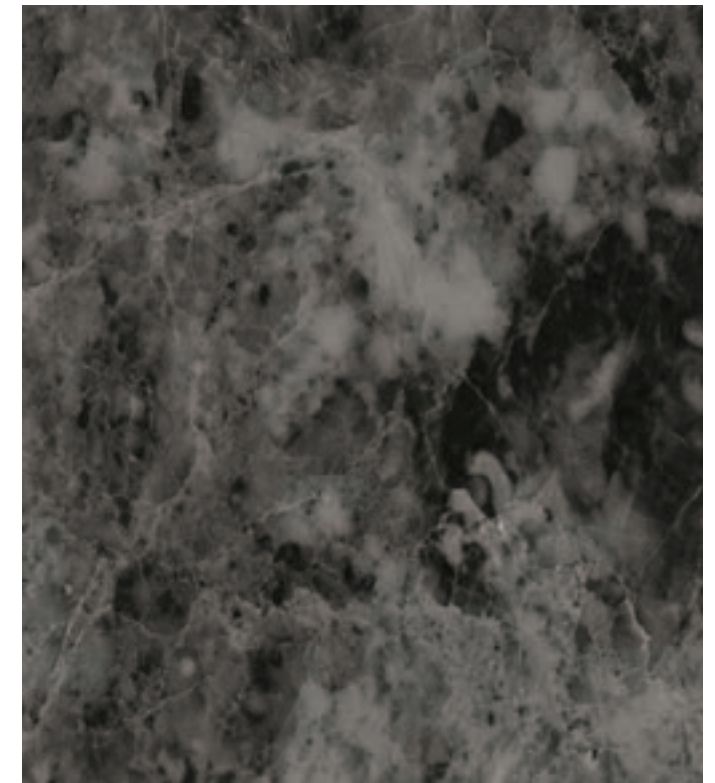
MG 446

The images are for illustrative purposes and may differ from actual product.



Marble

MG 445 ●



Marble

MG 446 ●

FABRIC & LEATHER

Add warmth to your space with our range of rich leather materials.
Blend with wood & rattan furniture to create a truly luxurious look and feeling.

DG/DF 3505

The images are for illustrative purposes and may differ from actual product.

FABRIC & LEATHER

방염 ● | 비방염 ● | 신제품 NEW

FABRIC



Plain Linen

DG/DF 3505 ●●



Plain Linen

DG/DF 3506 ●●



Plain Linen

DG/DF 3507 ●●

FABRIC & LEATHER

FABRIC

방염 ● | 비방염 ● | 신제품 NEW



Linen MG/MF 3060 ●●



Linen MG/MF 3061 ●●



Linen MG/MF 3062 ●●



Fabric MG/MF 452 ●●



Fabric MG/MF 453 ●●



Fabric MG/MF 454 ●●



Tweed TG 4000 ●



Natural Fabric MG/MF 455 ●●

FABRIC & LEATHER

LEATHER

Fire Retardant ● | Standard Range ● | NEW NEW



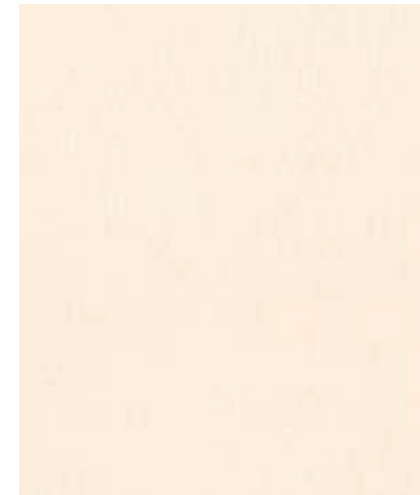
Leather MG 460 ●



Leather TG 410 ●



Square SE 806 ●



Leather TG 4015 ●



Cross Stripe SC 725 ●



Engraving SC 774 ●



Anaconda SP 840 ●

WOOD

From Standard OAK to TEAK and ELM, the various woodgrain designs are the best material to add warmth to the space. Special product such as 'MULTI PRINTING' products express the texture of wood more prominently, and a variety of patterns and colors. S, M, and N series are showing a rich & trendy woodgrain. Choose a product that fits your space.

ZG/ZF 5029

The images are for illustrative purposes and may differ from actual product.

WOOD

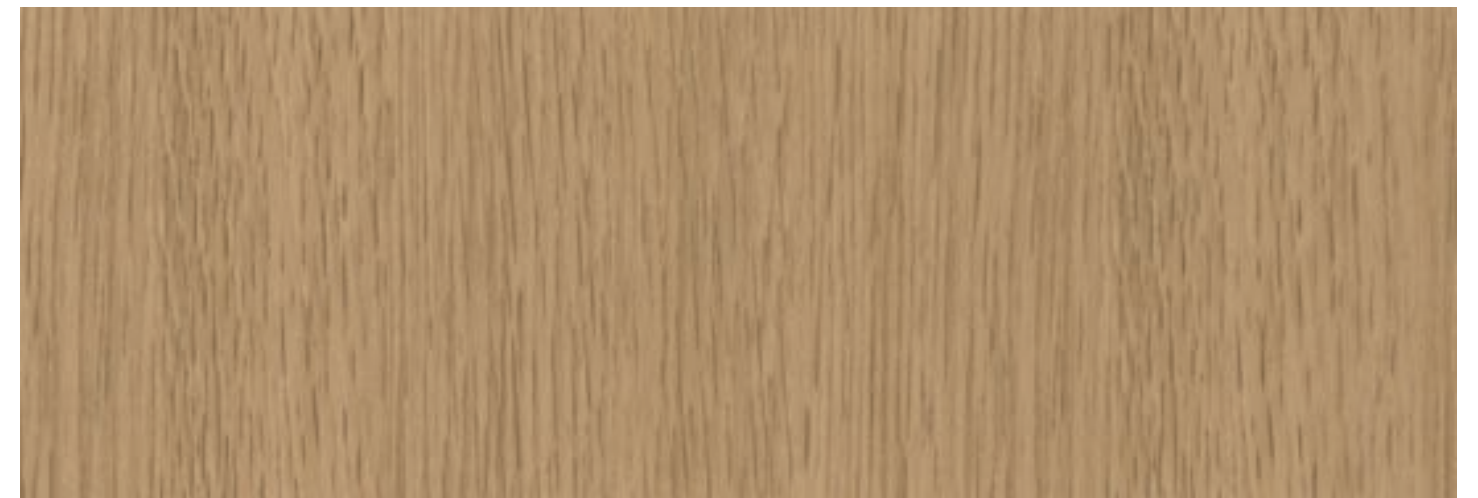
MULTI PRINTING WOOD

방염 ● | 비방염 ● | 신제품 NEW



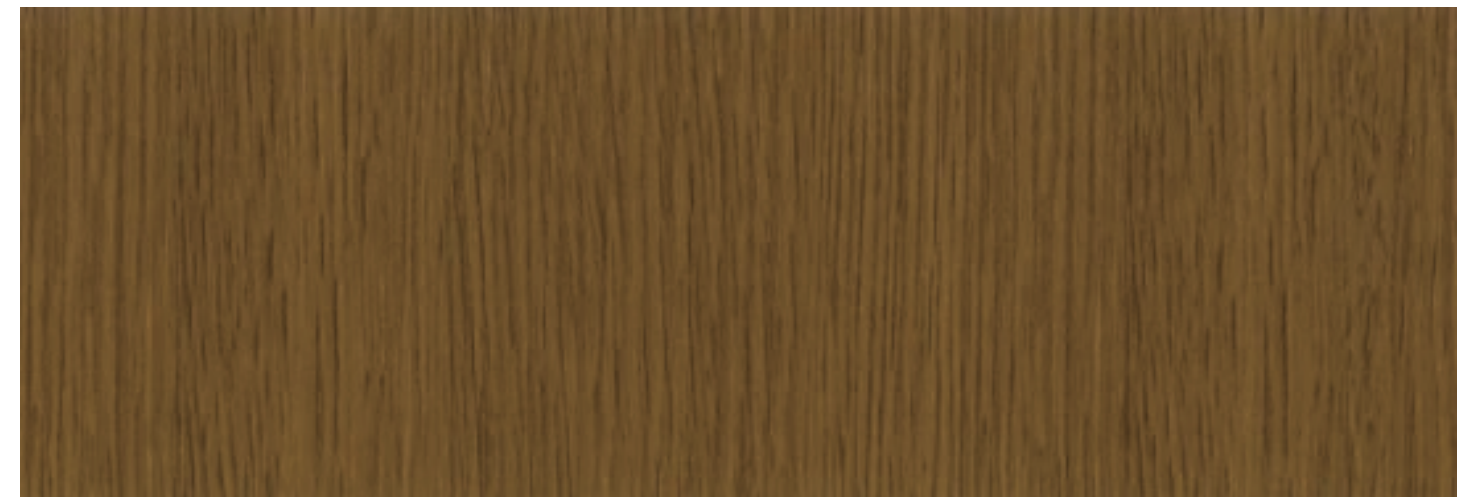
Oak

NEW ZG/ZF 5028 ●●



Oak

NEW ZG/ZF 5029 ●●



Oak

NEW ZG/ZF 5030 ●●

WOOD

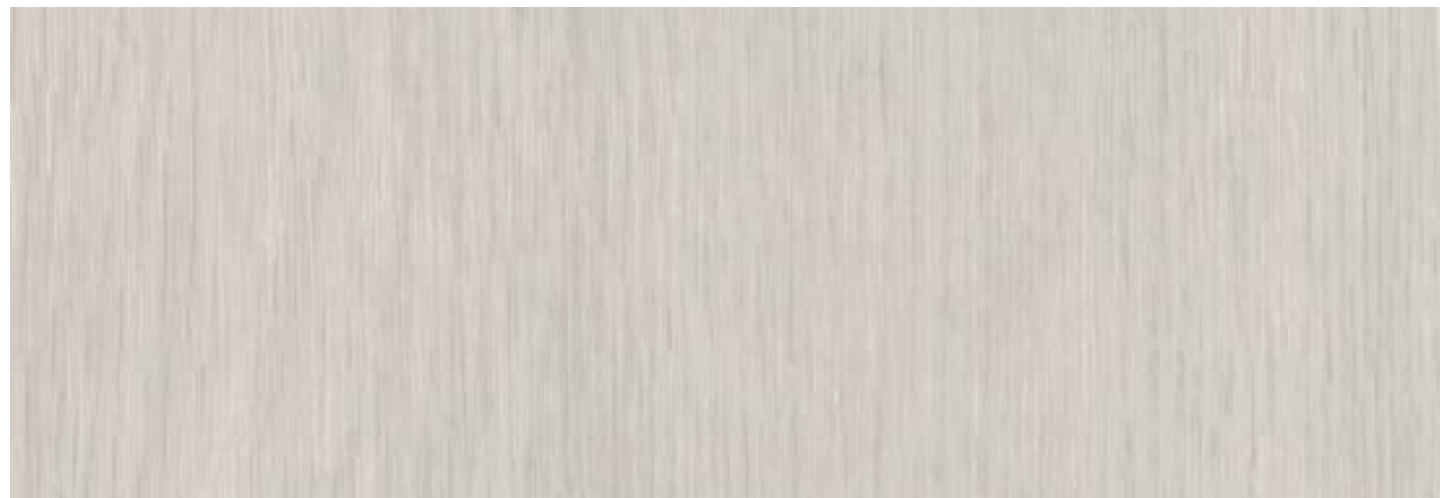
MULTI PRINTING WOOD

방염 ● | 비방염 ● | 신제품 NEW



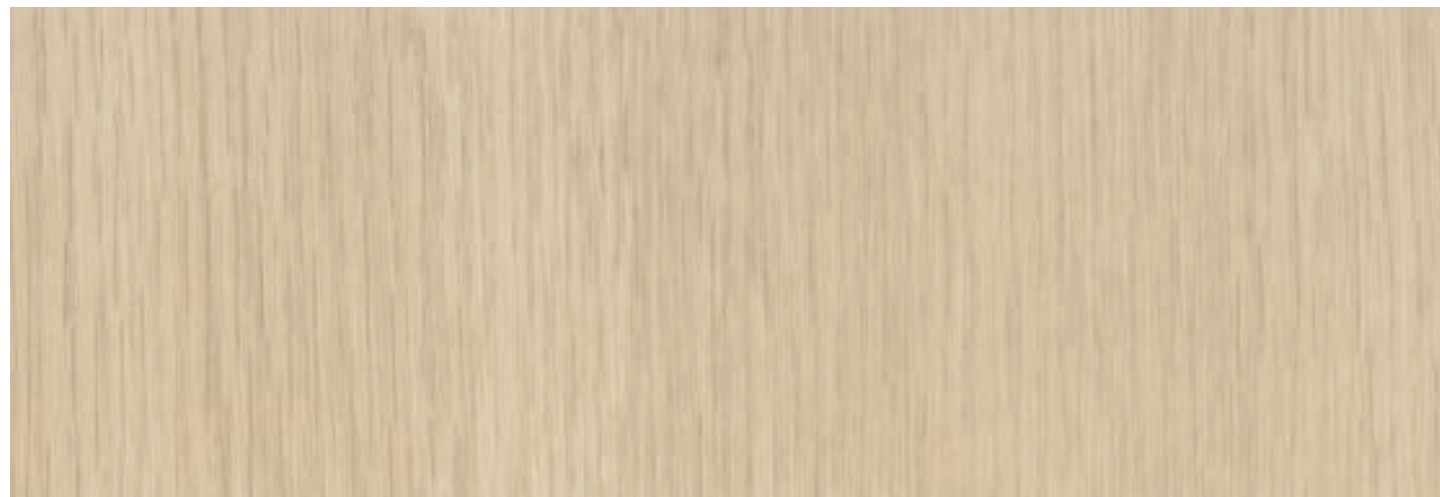
Light Oak

NEW ZG/ZF 5038 ●●



Light Oak

NEW ZG/ZF 5039 ●●



Light Oak

NEW ZG/ZF 5040 ●●



ZG/ZF 5040

상기 이미지는 이해를 돕기 위한 연출 이미지로 실제 제품과 다를 수 있습니다.

WOOD

MULTI PRINTING WOOD

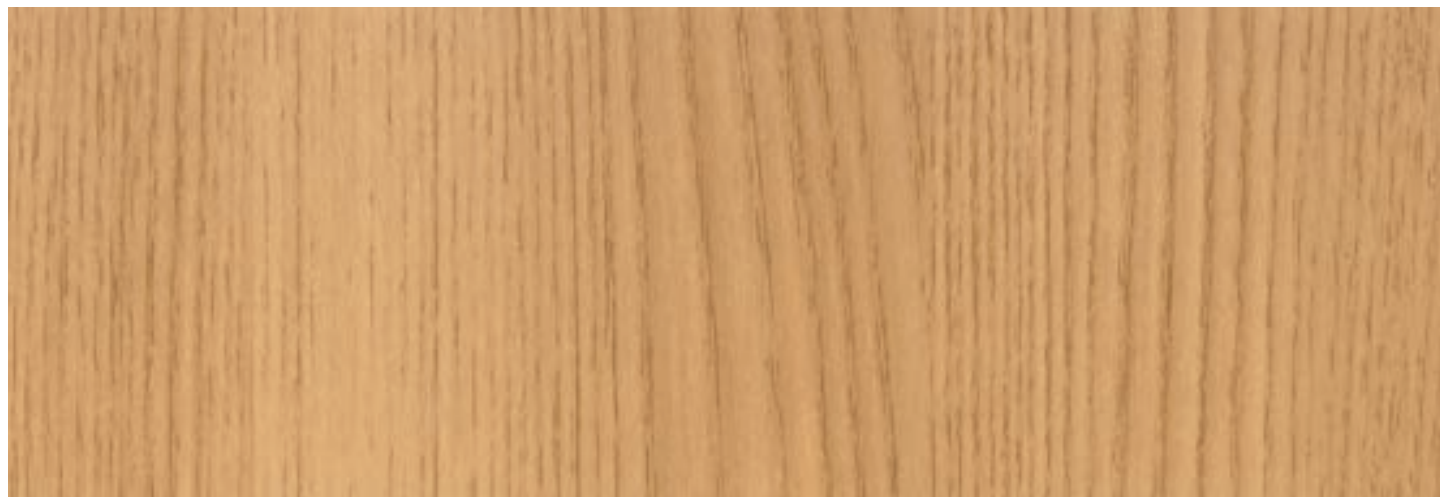
방염 ● | 비방염 ● | 신제품 NEW



Oak NEW ZG/ZF 5033 ●●



Oak NEW ZG/ZF 5034 ●●



Oak NEW ZG/ZF 5035 ●●



ZG/ZF 5035

상기 이미지는 이해를 돕기 위한 연출 이미지로 실제 제품과 다를 수 있습니다.

WOOD

MULTI PRINTING WOOD

방염 ● | 비방염 ● | 신제품 NEW



상기 이미지는 이해를 돕기 위한 연출 이미지로 실제 제품과 다를 수 있습니다.



Washed Ash

NEW ZG/ZF 5045 ●●

WOOD

MULTI PRINTING WOOD

Fire Retardant ● | Standard Range ● | NEW NEW



Washed Ash

NEW ZG/ZF 5041 ●●



Washed Ash

NEW ZG/ZF 5044 ●●



Washed Ash

NEW ZG/ZF 5042 ●●



Washed Ash

NEW ZG/ZF 5043 ●●

WOOD

MULTI PRINTING WOOD

방염 ● | 비방염 ● | 신제품 NEW



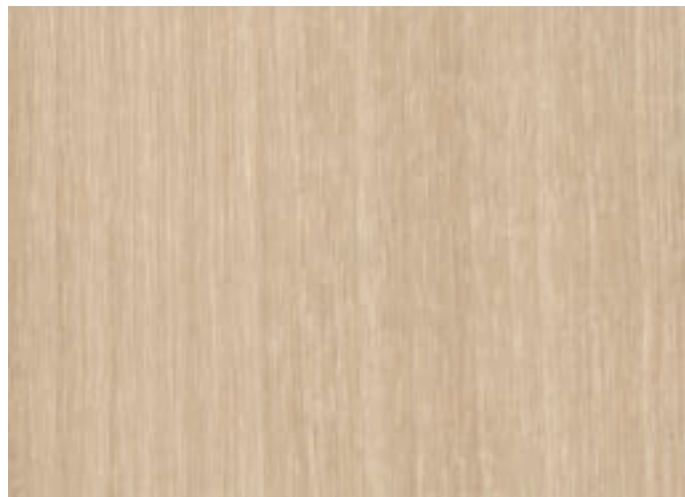
Elm

NEW ZG/ZF 5036 ●●



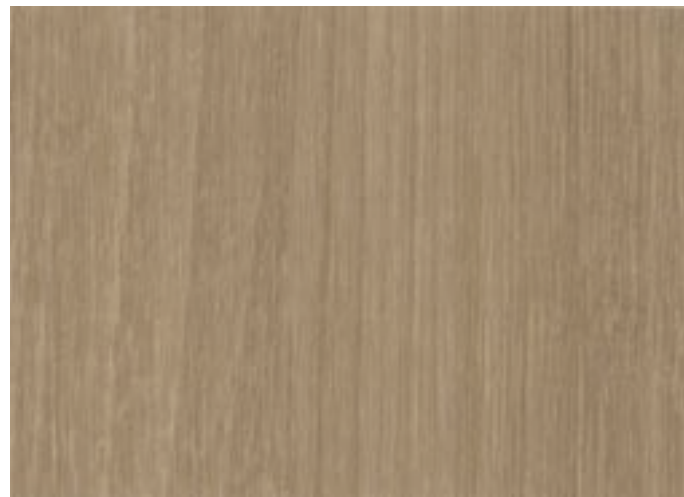
Elm

NEW ZG/ZF 5037 ●●



Maple

NEW ZG/ZF 5031 ●●



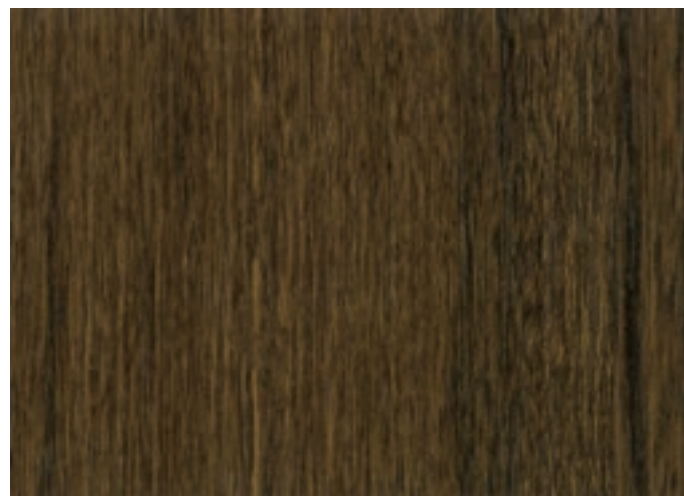
Maple

NEW ZG/ZF 5032 ●●



Amazahoue

NEW EG/EF 6100 ●●



Amazahoue

NEW EG/EF 6101 ●●

WOOD

MULTI PRINTING WOOD

Fire Retardant ● | Standard Range ● | NEW NEW



Oak

ZG/ZF 5019 ●●



Oak

ZG/ZF 5018 ●●



Oak

ZG/ZF 5020 ●●



Oak

ZG/ZF 5021 ●●



Oak

ZG/ZF 5022 ●●



Oak

ZG 5027 ●

WOOD

MULTI PRINTING WOOD

방염 ● | 비방염 ● | 신제품 NEW



Multi Print Wood **ZG/ZF 5000** ●●



Vintage Oak **ZG/ZF 5009** ●●



Multi Print Wood **ZG 5003** ●



Vintage Oak **ZG/ZF 5010** ●●



Vintage Oak **ZG 5011** ●



Vintage Oak **ZG/ZF 5012** ●●



Teak **ZG/ZF 5015** ●●



Teak **ZG/ZF 5016** ●●



ZG/ZF 5009

상기 이미지는 이해를 돕기 위한 연출 이미지로 실제 제품과 다를 수 있습니다.

WOOD
M series

방염 ● | 비방염 ● | 신제품 NEW



Ash

MG/MF 3084 ●●



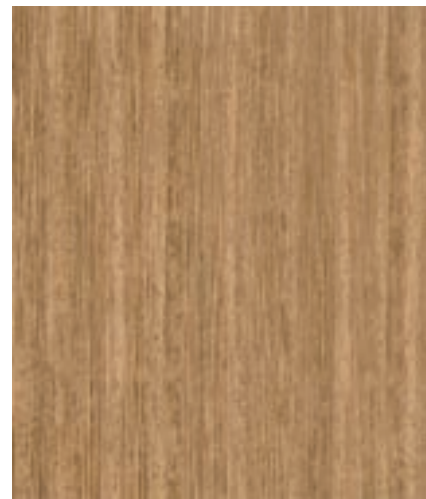
Pine

MG/MF 3069 ●●



Wizard Grain

MG/MF 3064 ●●



Wizard Grain

MG/MF 3065 ●●



Wizard Grain

MG/MF 3066 ●●



Ash

MG 3005 ●



Teak

MG 3006 ●



Primary Oak

MG/MF 3007 ●●



MG/MF 3084

상기 이미지는 이해를 돕기 위한 연출 이미지로 실제 제품과 다를 수 있습니다.

WOOD
N series

방염 ● | 비방염 ● | 신제품 NEW



String Wood NG 402 ●



Sycamore NG 158 ●



Stripe Wood NG/NF 326 ●●



Pearl Ash NG 2010 ●



Oak NG 2006 ●



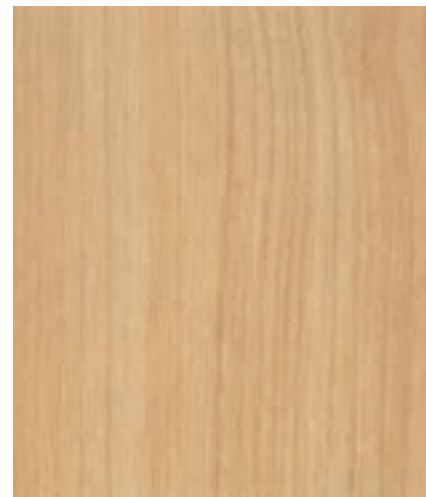
White Ash NG/NF 2001 ●●



Elm NG 217 ●



Elm NG 218 ●



Pear NG/NF 250 ●●

WOOD
N series

Fire Retardant ● | Standard Range ● | NEW NEW



Birch NG/NF 225 ●●



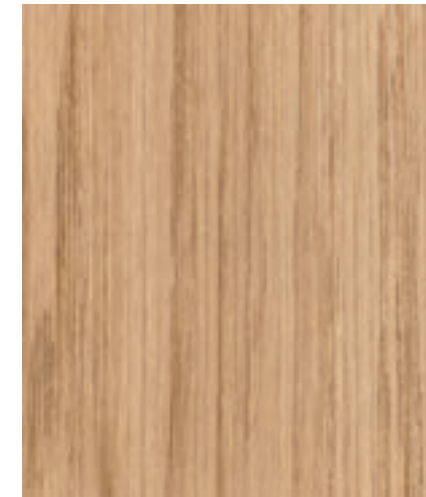
Oak NG/NF 207 ●●



Vilora NG/NF 284 ●●



Maple NG/NF 388 ●●



Oak NG/NF 2020 ●●



Elm NG/NF 336 ●●



Maple NG/NF 349 ●●



Walnut NG/NF 227 ●●



Oak NG 971 ●

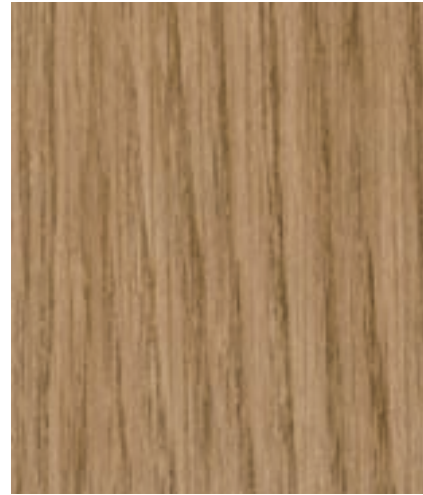
WOOD

N series

방염 ● | 비방염 ● | 신제품 NEW



Oak PG 904 ●



Oak NG/NF 2021 ●●



Oak NG/NF 2022 ●●



Style Bamboo NG 2024 ●



Multi Wood NG 253 ●



Noce NG/NF 03 ●●



Multi Wood NG 256 ●

WOOD

N series

Fire Retardant ● | Standard Range ● | NEW NEW



Oak NG 960 ●



Walnut NG 267 ●



Oak NG 962 ●



Antique Teak NG 493 ●



Antique Pine NG/NF 400 ●●



Golden Teak PG 940 ●

WOOD
S series

방염 ● | 비방염 ● | 신제품 **NEW**



Antique Wood **SG/SF 1107** ●●



Ash **SG/SF 179** ●●



Elm **SG/SF 81** ●●



Ash **SG/SF 1110** ●●



Acacia **SG 12** ●



Pine **SG/SF 142** ●●



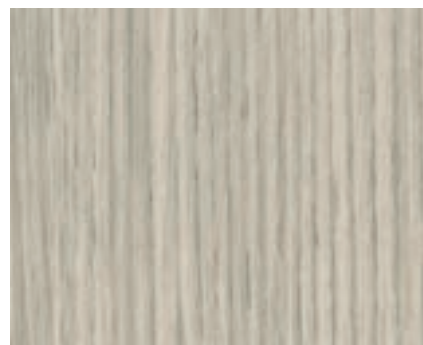
Washed Oak **SG/SF 1113** ●●



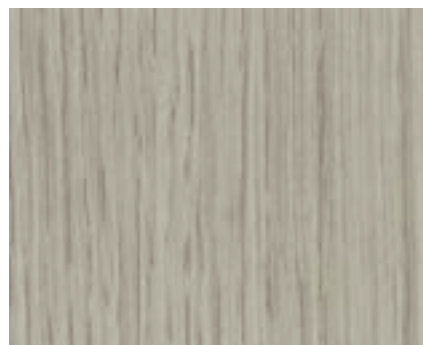
Ash **SG/SF 1100** ●●



Ash **SG/SF 178** ●●



Ivy **SG 209** ●



Ivy **SG 211** ●



Oak **SG/SF 361** ●●

WOOD
S series

Fire Retardant ● | Standard Range ● | NEW **NEW**



Ash **SG 140** ●



Pine **SG 143** ●



Ash **SG/SF 37** ●●



Ash **SG/SF 1111** ●●



Ash **SG/SF 1112** ●●



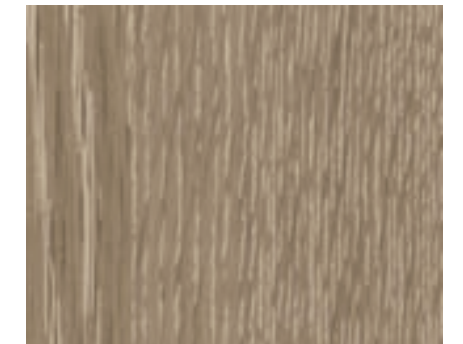
Oak **SG 171** ●



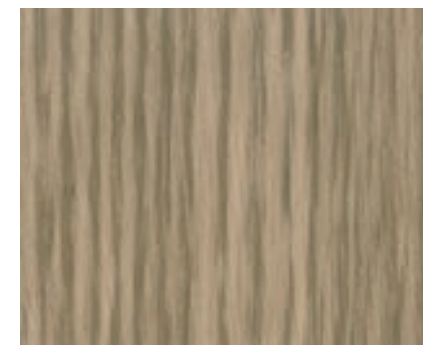
French Oak **SG/SF 30** ●●



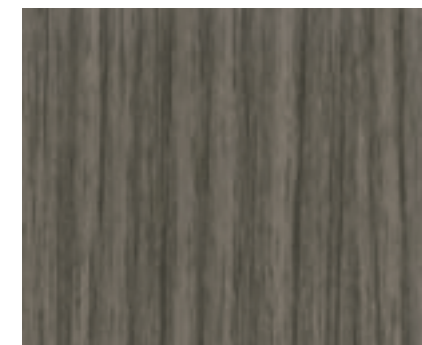
Oak **SG/SF 82** ●●



Washed Oak **SG 1115** ●



Oak **SG/SF 40** ●●



Montaigne Walnut **SG 385** ●



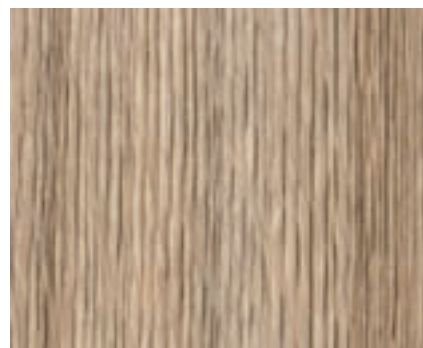
Ash **SG 1116** ●

WOOD
S series

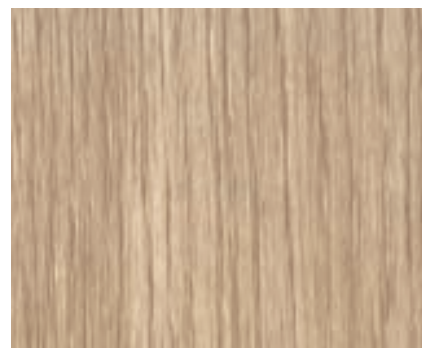
방염 ● | 비방염 ● | 신제품 NEW



상기 이미지는 이해를 돕기 위한 연출 이미지로 실제 제품과 다를 수 있습니다.



French Oak SG/SF 29 ●●



Oak SG/SF 55 ●●



Oak SG/SF 54 ●●



Teak SG/SF 249 ●●



Ash SG/SF 1102 ●●



Compile Wood SG/SF 282 ●●

WOOD
S series

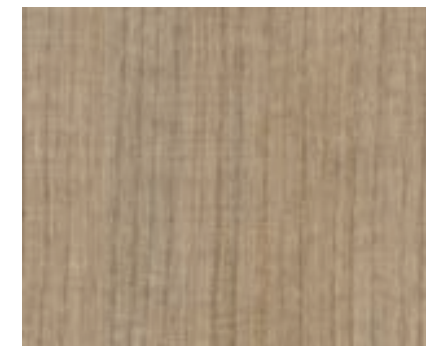
Fire Retardant ● | Standard Range ● | NEW NEW



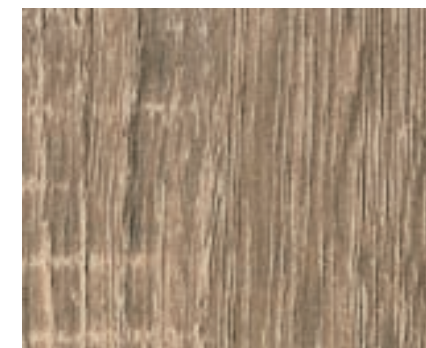
Maple SG/SF 20 ●●



Ash SG/SF 1101 ●●



Cherry SG 1118 ●



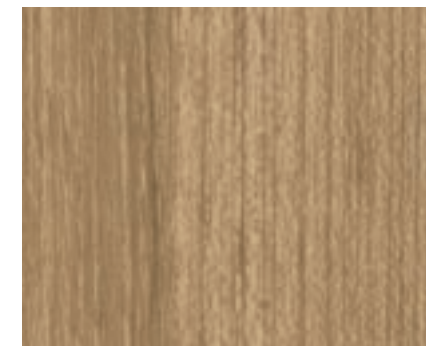
Sonoma Oak SG/SF 167 ●●



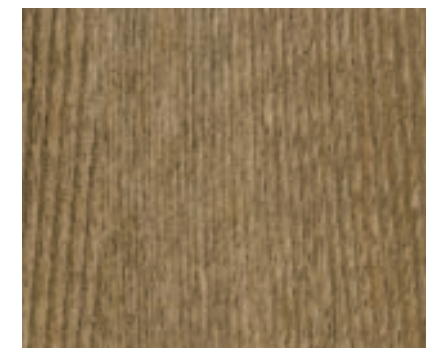
Maple SG/SF 43 ●●



Washed Oak SG/SF 1114 ●●



Teak SG/SF 09 ●●



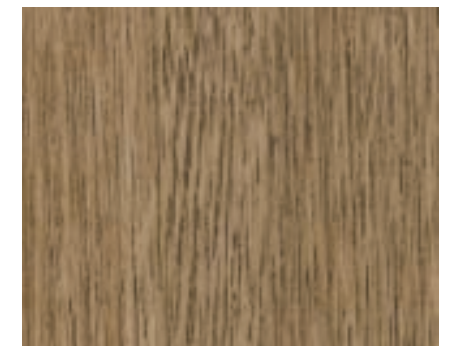
Ash SG 141 ●



Ash SG/SF 181 ●●



Oak SG 98 ●



Ash SG/SF 177 ●●



Oak SG/SF 189 ●●

WOOD

S series

방염 ● | 비방염 ● | 신제품 NEW



Ash SG/SF 58 ●●



Maple SG/SF 363 ●●



Castagno Oak SG/SF 381 ●●



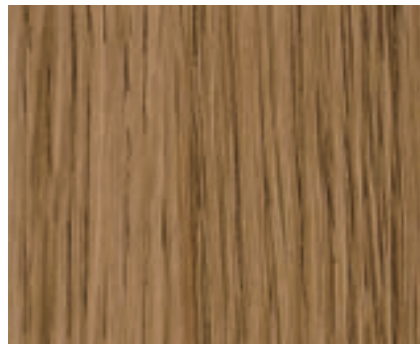
Maple SG/SF 251 ●●



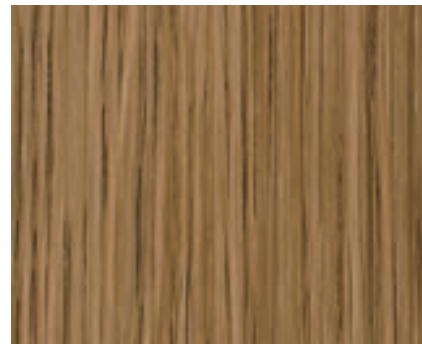
Oak SG/SF 190 ●●



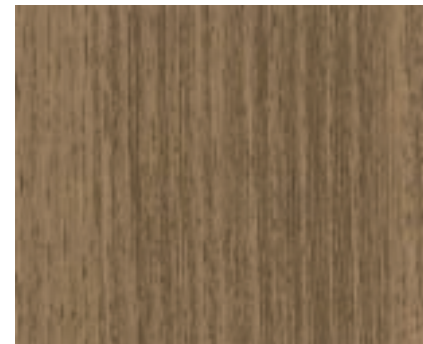
Akagashi SG/SF 237 ●●



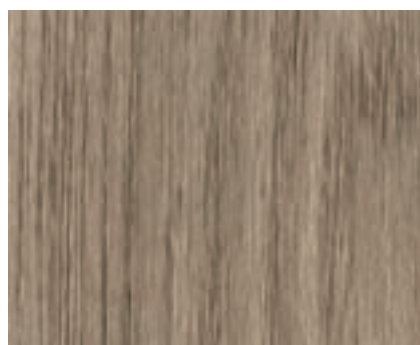
Oak SG/SF 169 ●●



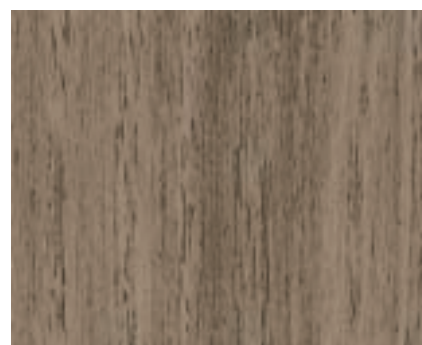
Oak SG/SF 170 ●●



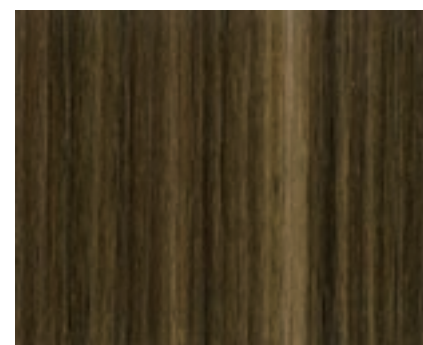
Acacia SG/SF 10 ●●



Oak SG 56 ●



Acacia SG/SF 186 ●●



Compile Wood SG/SF 148 ●●

WOOD

S series

Fire Retardant ● | Standard Range ● | NEW NEW



Cherry SG/SF B1 ●●



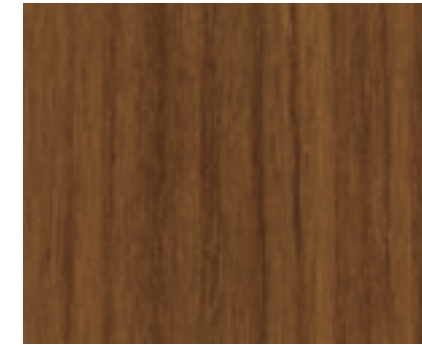
Pine SG/SF 44 ●●



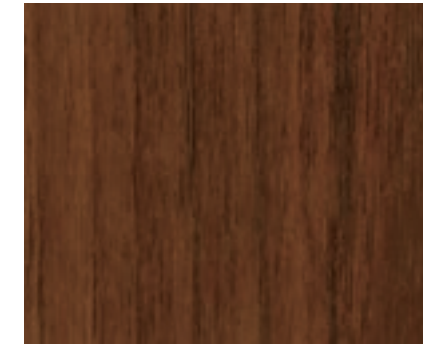
Cherry SG/SF 101 ●●



Castagno Oak SG/SF 383 ●●



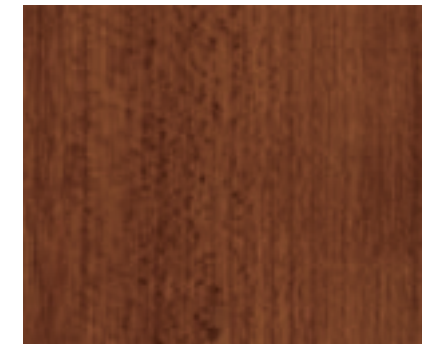
Cherry SG 26 ●



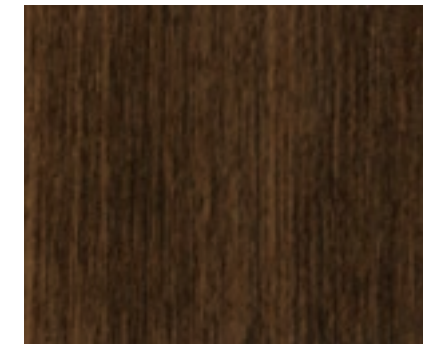
Cherry SG 23 ●



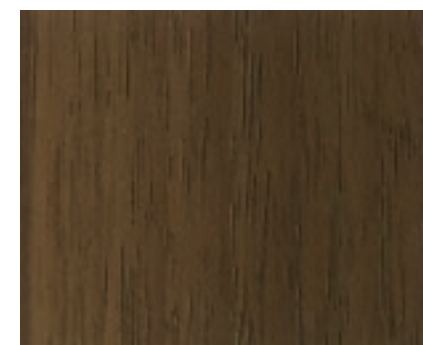
Cherry SG/SF 31 ●●



Cherry SG 28 ●



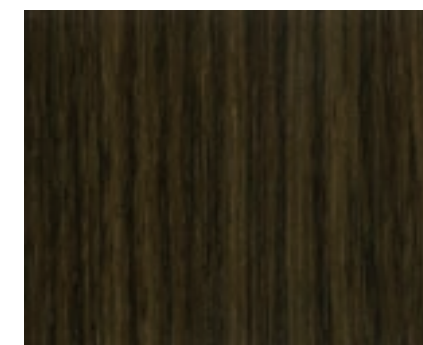
Anegre SG/SF 1143 ●●



Walnut SG/SF 89 ●●



Ash SG /SF 1103 ●●

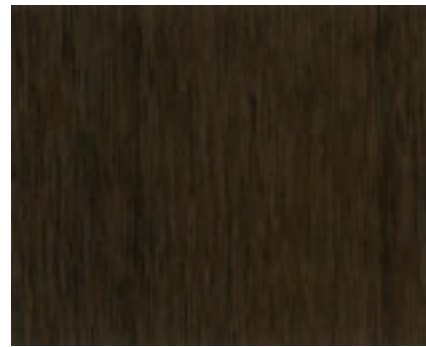


Walnut SG/SF 149 ●●

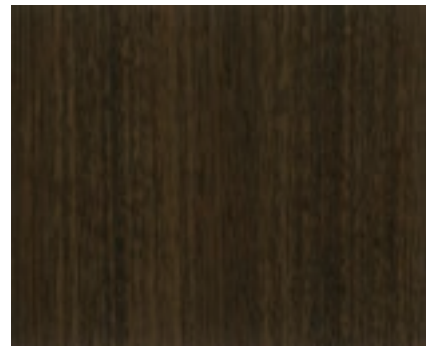
WOOD

S series

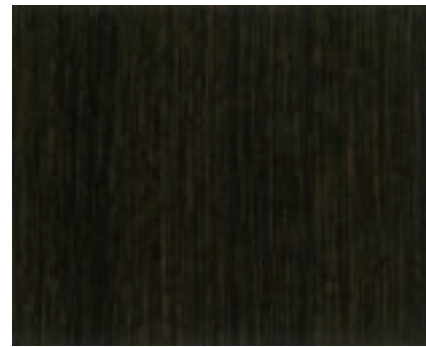
방염 ● | 비방염 ● | 신제품 NEW



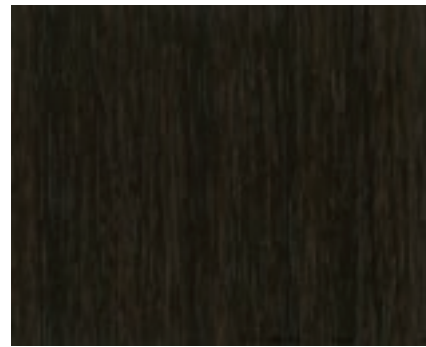
Walnut SG/SF 278 ●●



Sapele SG/SF 243 ●●



Teak SG/SF 36 ●●



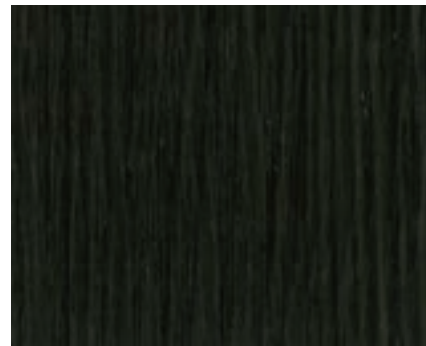
Walnut SG 61 ●



Ash SG/SF 164 ●●



Antique Wood SG 230 ●



Antique Wood SG/SF 1109 ●●



Black Wood SG/SF 52 ●●



SG/SF 243

상기 이미지는 이해를 돕기 위한 연출 이미지로 실제 제품과 다를 수 있습니다.

VERSA-TILE

Versa-tile's Versa means 'a change', 'an Alteration' or 'another one'.
You can create a variety of different looks compared to traditional interior films.
Apply to floors that need maintenance, walls in the kitchen, or art walls.

BG 8007

The images are for illustrative purposes and may differ from actual product.

VERSA-TILE

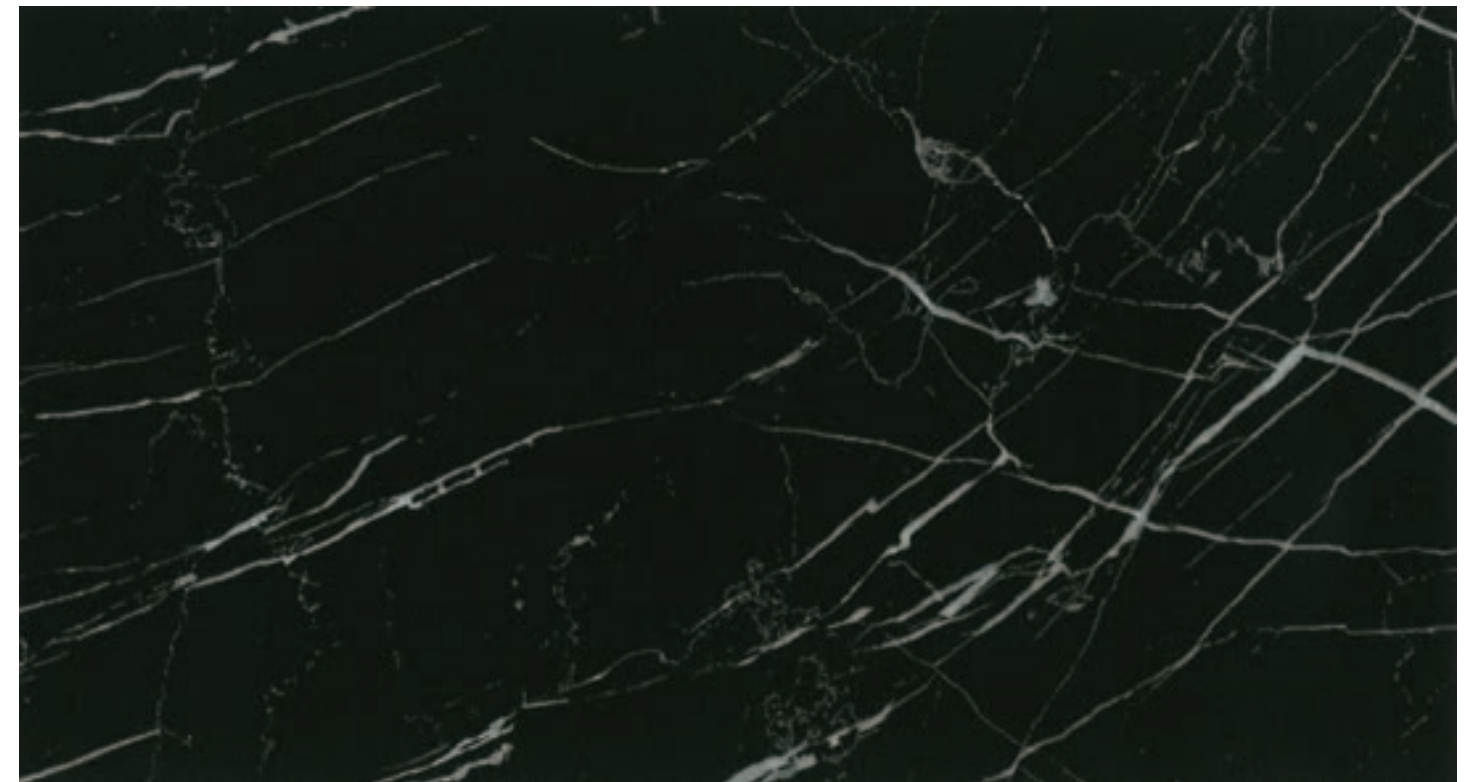
방영 ● | 비방영 ● | 신제품 NEW

Versa-tile은 기존 인테리어 필름의 두께 변경과 바닥재 기능성 추가로 유지 보수가 필요한 바닥, 주방의 벽면 또는 아트월 등 다양한 표현이 필요한 부분에 적용할 수 있도록 제작된 상품입니다.



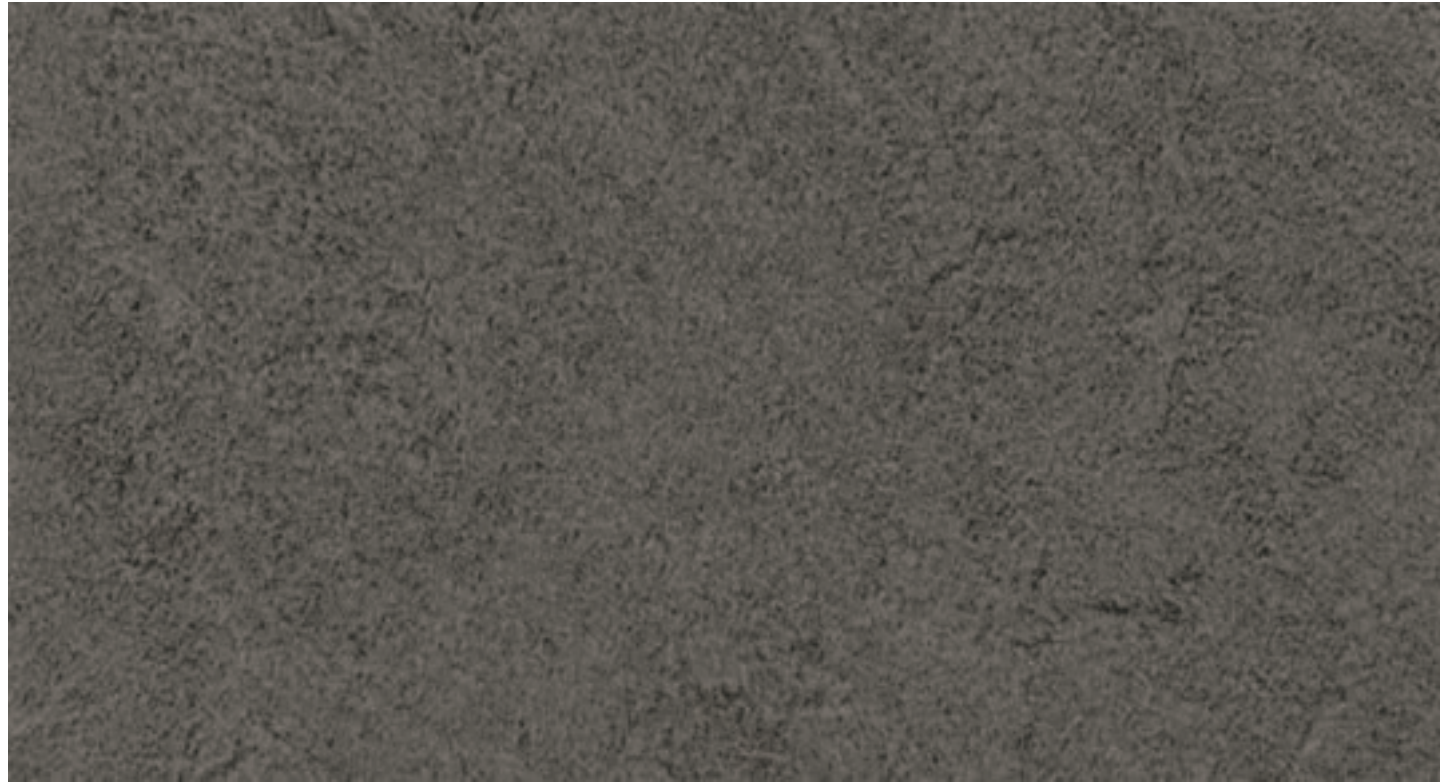
Carrara

NEW BG 8006 ●



Marquina

NEW BG 8007 ●



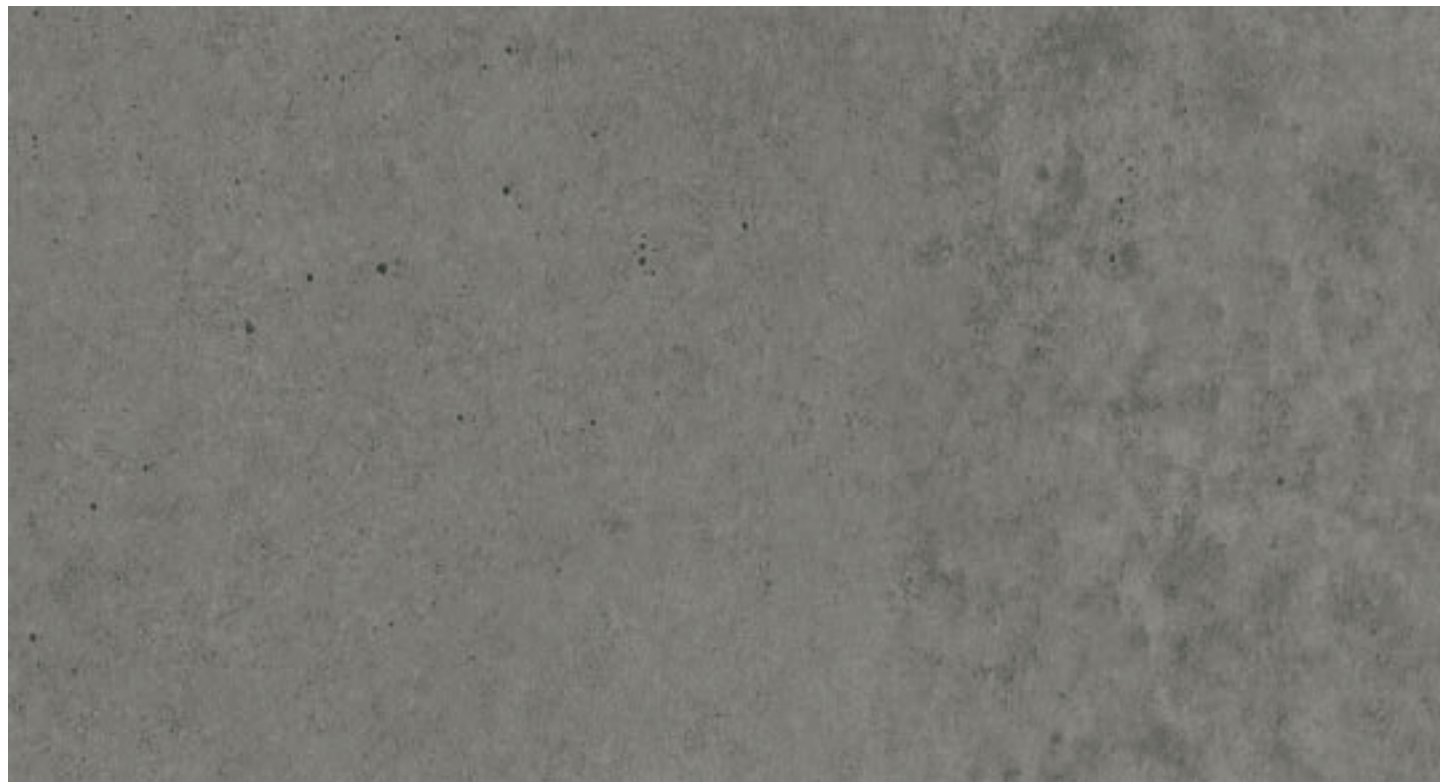
Travertine

BG 8004 ●



Herringbone

BG 8001 ●



Concrete

BG 8003 ●

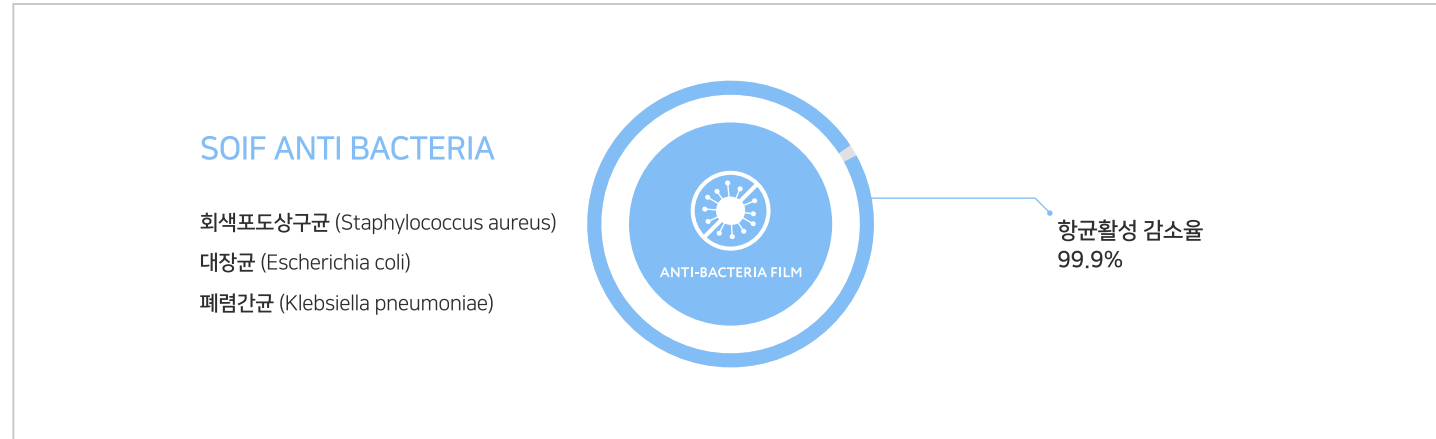


Herringbone

BG 8000 ●

ANTI BACTERIA FILM

SOIF에서 개발한 항균인테리어필름으로 더 안전하고 편안한 공간을 연출해 보세요.
항균인테리어필름이 필요한 공간에 적용 가능합니다. 시험성적서에서 항균력(99.9%)을 확인해 보세요.



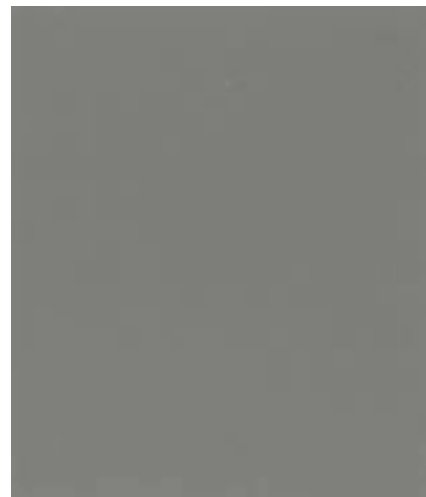
항균인테리어필름은 주문 제작을 통하여 삼성인테리어필름 전 제품에 적용이 가능합니다.



AB 3800 ●



AB 3801 ●



AB 3802 ●



AB 3803 ●



AB 3804 ●






AB 3801

상기 이미지는 이해를 돕기 위한 연출 이미지로 실제 제품과 다를 수 있습니다.

WHERE IS ART
THERE IS
SOIF

SOIF
GLOBAL

 GET IT ON Google Play	
www.samsungfilm.co.kr	

본 사 서울특별시 강서구 개화길8 (개화동)
공 장 경기도 포천시 영종면 영일로 215-6

(주)삼성인테리어필름

(1) Preparation

- Before applying interior films, the surface condition of where to be applied must be checked for a proper installation.

MDF	Please use densely homogenous MDFs, this enhances adhesion and fire retardant performance.
Iron plate (aluminium, iron, etc.) steel	Remove contaminants such as oil on the surface with solvents such as alcohol, check for damage to the surface due to solvents, treat irregularities and welding areas with filler and remove any foreign matter with wallpaper scrappers, sandpaper etc. and then clean area with lint free cloths and cleaning brushes.
Ready-made products	Depending on the surface condition, the primer must be used to prevent shrinkage and dropout, and the surface must be checked prior to the installation.

- Before intallation, inspection of the product selected by the consumer (product name, pattern, appearance status) must re-check in advance.
- Installation work must be conducted after inspection of all preparation works done, this includes the coating, painting and sealant process of any woodwork or porous substrates.
- For a stable working environment, check the humidity of the construction site and keep the room temperature at (15°C to 25°C) if possible.
- The across section - overlapping area (cutting area) of the surfaces (MDF, etc.) where the film will be applied must be sufficiently cleaned or polished with sandpaper. The condition of the wood surface (particularly the edges) is rough, it must be cleaned or polished with sandpaper or applied after filler treatment.

(2) Primer Treatment

- Apply a sufficient primer to the surface of substrate (MDF, PB, etc.) 1-2 times.
- Since the cutting (slit) surface of wood has a high absorption rate and uneven surfaces, the primer should be fully applied 2-3 times.
- Primers will need approximately 2 hours drying time. It is advised and recommended that you check the substrate and thoroughly dry and clean prior to installation.

(3) Installation Film

- Once the primer surface is dry enough, make the surface smooth and overlappng section is needed to be cleaned with sandpaper and remove residue with a lint free cloth and make sure area is completely dust free.
- Surface treatment by using sandpapers is required and make sure the surface is clean before applying primer to enhance adhesion performance.
- Please make a pressure using by Helt or Hera (Spatula). Rubbing or Hard Pressure may work to stengthen the Adhesion 2 -3 times.
- Apply interior films carefully, not wrapping films forcefully pull over MDF plates, heat or humidity can cause a MDF distortion.

(4) Specific Product Instructions

SC/SE (man-made leather type)
<ul style="list-style-type: none"> • Do not overlap due to the embossed depth and please apply Solvent Type Primer to press firmly. In order to maximize the visual effect of the product, it is necessary to check the type and condition of the surfaces and remove all residues prior to installation. Do not rub too hard.
SP
<ul style="list-style-type: none"> • To enlarge the design effect, the film is too soft on the top. Please do not rub too hard.
JG/JF
<ul style="list-style-type: none"> • JG/JF is specially processed using Alumium, detachment of where film lines are overlapped can cause a peeling of films surfaces. So pay attention at installing
PREMIUM MATT LINE-UPS, SOFT MATT (Soild)
<ul style="list-style-type: none"> • As being treated with a special process on the surfaces, it feels initially not sticky enough in the overlapped parts, but being fully pressed adhesive parts will be stabilized stronger over time. (Method when contaminated : Wipe with an alkaline alcohol to remove.)

(5) Product Storage and Precautions

- Please avoid moisture and direct sunlight, and please do not use it outdoors.
- The surface may become discolored during prolonged exposure to sunlight or ultraviolet light.
- It is recommended that correct storage temperatures are used for storing the product to be free from long term storage defects. (15°C to 25°C)
- When installing the film, please use manufacturer's recommend products.

- Unauthorized reproduction and use of content published in this sample book is prohibited.
- The colors of the products listed in the samplebook may differ from the actual product.

(1) 사전 준비 작업

- 필름이 시공되는 피착재의 종류와 표면상태를 점검하여 시공 전후 문제 발생 부위를 사전에 점검해야 합니다.

MDF	밀도와 표면상태에 따라 시공 점착력과 방염 성능의 차이가 발생하므로 밀도가 균일한 MDF를 사용하도록 합니다.
철판(알루미늄, 철 등)	알코올 등의 용제로 표면의 기름 등 오염물질을 제거하고, 용제로 인한 면의 손상을 확인 후 요철부위나 용접부위를 퍼티로 처리하고, 샌드페이퍼 등으로 표면 연마를 한 후에 먼지떨이 붓으로 이물질 제거합니다.
기성제품	표면상태에 따라 프라이머를 사용해야 수축 및 탈락을 방지할 수 있으며, 피착면을 반드시 점검해야 합니다.

- 시공 전 소비자가 선정한 제품의 이상 유무(제품명, 패턴, 외관상태, 방염여부)에 대해 사전검수를 진행해야 합니다.
- 필름시공은 목공사 후 도장 및 도배공정과 협의 후 시행해야 합니다.
- 안정적인 작업환경을 위해 시공현장의 습도를 확인하고, 실내온도를 가급적 상온(15°C~25°C)으로 유지하여 주십시오.
- 필름이 시공될 피착재(MDF 등)의 단면(절단)부위는 샌드페이퍼로 충분히 연마해야 합니다.
- 특히, 목재류의 경우 꺾임부위 및 에지(Edge)부분의 표면상태가 거친 경우에는 샌드페이퍼로 연마하거나 퍼티 처리 후 시공해야 합니다.

(2) 프라이머 처리

- 프라이머 처리시 목재(MDF, PB 등)표면 및 절단면은 흡수율이 높고 면이 고르지 않기 때문에 프라이머를 2~3회 도포합니다.
- 도포 완료 후 충분히 건조하여야 하며, 습한 곳에서는 표면을 반드시 확인 후 시공하여야 합니다.

(3) 시공 방법

- 프라이머 도포면이 충분히 건조되면, 샌드페이퍼로 표면과 단면을 연마한 후 이물질들 먼지떨이나 붓으로 제거합니다.
- **제품 Lot간 색상차이가 발생할 수 있으므로 선 부착제품과 색상확인 후 시공해야 합니다.**
- 인테리어필름의 점착면은 샌딩처리가 되어야 하며, 점착력을 보강하기 위해 프라이머를 사용할 수 있습니다.
- 헬트나 헤라를 이용하여 표면이 완전히 밀착되어 정착되도록 충분히 문질러야 하며, 단면인 경우에는 2~3회 강한 힘으로 압착해야 합니다.
- 인테리어필름은 제품 특성상 고온의 열 또는 MDF의 수축으로 인한 제품 수축이 발생할 수 있으므로 무리하게 당기거나 열에 주의하여 시공하여야 합니다.

(4) 특정제품 시공 유의사항

SC/SE (인조가죽 타입)
<ul style="list-style-type: none"> • 검침시공시 엠보깊이 및 표면처리층으로 인해 박리 우려가 있으므로 검침시공을 하지 마십시오. • 부득이한 검침시공시 반드시 유성프라이머 처리 후 시공해야 들뜸현상을 막을 수 있습니다. • 제품의 표면부위가 약하므로 시공시 강하게 문지르면 표면에 손상우려가 있으니 작업시 주의하시기 바랍니다.
SP
<ul style="list-style-type: none"> • 디자인 효과로 인하여 표면부위가 소프트하므로 시공시 강하게 문지르면 표면에 손상 우려가 있으므로 주의하시기 바랍니다.
JG/JF
<ul style="list-style-type: none"> • 알루미늄을 이용한 특수한 공법의 제품으로 검침시공 부위의 필름간의 탈착으로 인하여 표면층의 박리현상이 발생할 수 있으므로 시공시 주의하시기 바랍니다.
프리미엄 매트코팅 제품군, 소프트 매트 (단색)
<ul style="list-style-type: none"> • 제품표면이 특수가공 처리된 제품으로, 검침 시공시 적당한 힘으로 부드럽게 충분히 눌러주어 완전히 압착시킵니다. 잘 붙지 않는 느낌이 있으나 충분히 눌러주어 압착되면 시간이 지날수록 점착면이 안정화됩니다. (오염되었을때 방법 : 알칼리성 알코올로 닦아서 제거)

(5) 제품 보관 및 주의사항

- 습기와 직사광선을 피해 시공해 주시고, 옥외에는 사용하지 말아 주십시오.
- 태양광이나 자외선에 장시간 노출시 표면이 변색되는 경우가 있을 수 있습니다.
- 제품포장 해체 후 오래 보관할 경우 제품표면의 크랙현상 및 점착력 약화가 있을 수 있으니 주의하시기 바랍니다.
- 필름 시공시 프라이머는 SOIF 전용 프라이머를 사용해야 합니다.

- 본 샘플북에 게재된 내용의 무단 복제 및 사용을 금지합니다.
- 수록된 제품의 색상은 실제 제품과 차이가 있을 수 있습니다.